



10A Cheviot Drive Truganina VIC

4 2 1

Located in the ever so popular Arndell Park estate and only a stone's throw away from YMCA Truganina South Early Learning Centre, Arndell Park Early Childhood Learning Centre, Williams Landing Shopping Centre, Williams Landing Train Station, Truganina South Primary School, Westbourne Grammar School, public transport and all other amenities with easy access to the freeway. Offering generous sized living and an abundance of natural life and offering the next lucky owners.

? Four great size bedrooms

? Master bedroom located downstairs with ensuite and walk in robe

? Main bathroom with double vanity

? Central kitchen with an abundance of cupboard space, stones benchtops and equipped with stainless steel appliances

? Laundry room with separate toilet

Price : \$ 575,000

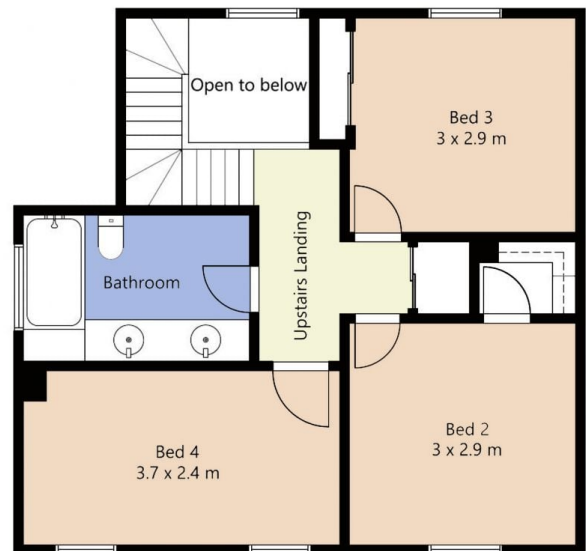
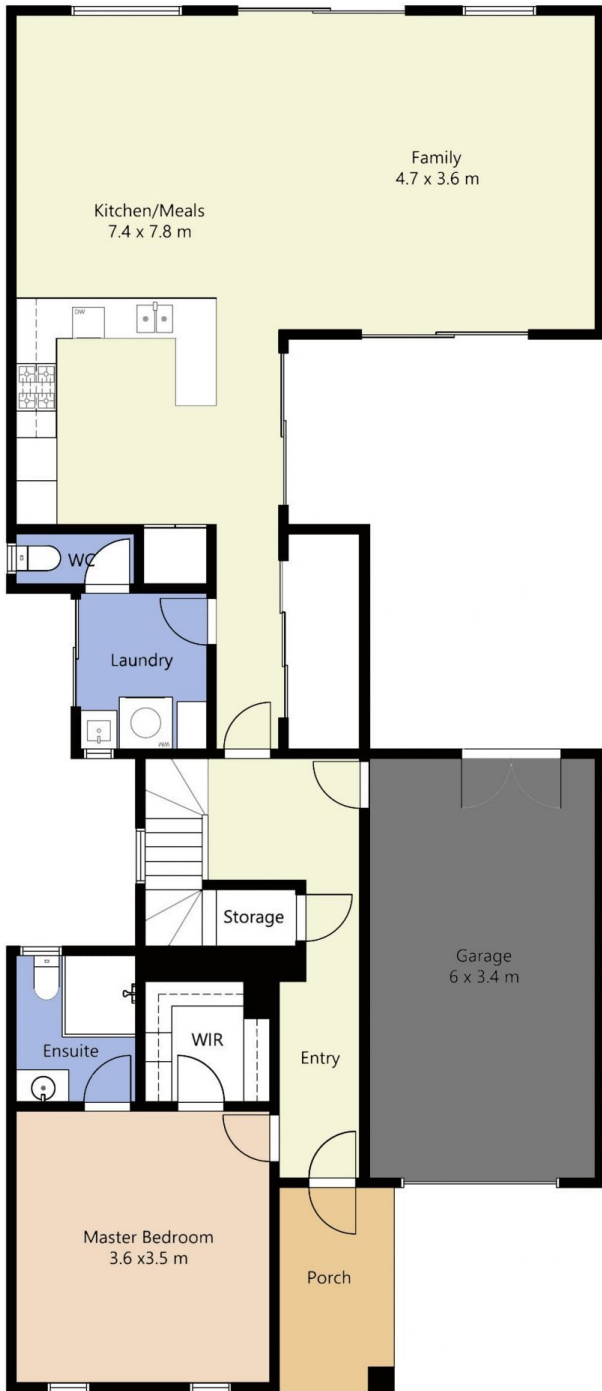
Building Size : 160 sqm

Land Size : 280 sqm

View : <https://www.ypa.com.au/7362009>



Mitch Smit
0450 913 513



FLOOR PLAN IS PROVIDED AS INDICATIVE LAYOUT ONLY, MEASUREMENTS ARE NOT AVAILABLE, FLOORPLAN IS NOT TO SCALE.
NO GUARANTEES PROVIDED ON ACCURACY

10A Cheviot Drive, Truganina