



2/2 East Gateway Wyndham Vale VIC

2 1 1

Positioned in a quiet street, this perfectly set out stand alone unit with no strata fees is ideally situated, with all of the amenities you could ask for at your fingertips including:

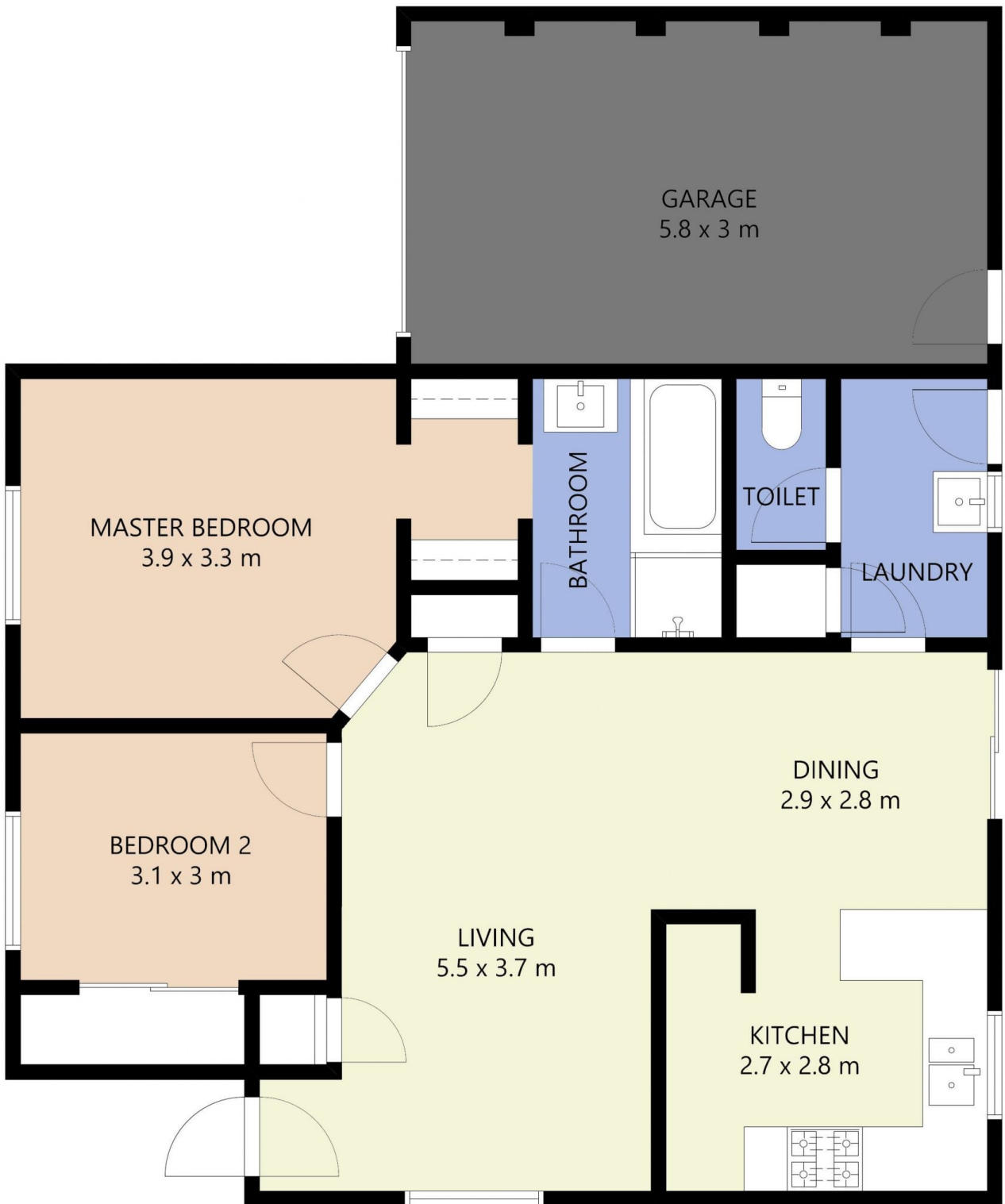
- ? Wyndham Vale Square and Manor Lakes shopping centres,
- ? Eagle Stadium,
- ? Childcare centres,
- ? Wyndham Vale and Iramoo Primary Schools and
- ? Easy access to Wyndham Vale train station and close to multiple bus stops

It boasts fully landscaped front and rear yards, fitted with an automated sprinkler system and a single car garage. On entry, you will be welcomed with a large living space that opens into a well-proportioned dining area and beautifully renovated kitchen with new stainless-steel appliances. A spacious master bedroom with a walk-in robe leads into the

Price : \$ 392,500
Land Size : 224 sqm
View : <https://www.ypa.com.au/7362004>



Jarrod Loughlin
0405 857 895



FLOOR PLAN IS PROVIDED AS INDICATIVE LAYOUT ONLY, MEASUREMENTS ARE NOT AVAILABLE, FLOORPLAN IS NOT TO SCALE.
NO GUARANTEES PROVIDED ON ACCURACY

2/2 East Gateway, Wyndham Vale