



103 Songlark Crescent Werribee VIC

3 2 2

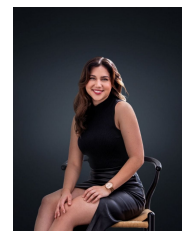
Situated on a large 576m2 block (approx.), this home presents the perfect opportunity for investors and first home buyers alike. Set in the heart of Werribee, a stone's throw away from some of the most desired amenities in the city of Wyndham including Pacific Werribee shopping centre, Aqua pulse, Hoppers Crossing and Werribee Train Stations and Werribee's CBD. This wonderful property offers the next lucky owners.

- ? Three generous sized bedrooms all with built in robes
- ? Master bedroom with ensuite
- ? Central bathroom
- ? Large front living room upon entry with built in bar
- ? Kitchen with stainless steel appliances and stone bench tops overlooking the large meal area
- ? Fantastic decked outdoor entertaining area with café blinds
- ? Oversized powered shed/workshop

Price : \$ 571,800
Land Size : 576 sqm
View : <https://www.ypa.com.au/7362002>



Mitch Smit
0450 913 513



Trinity Osorio Schwarz
0426 356 739

