

10 Carly Terrace Werribee VIC

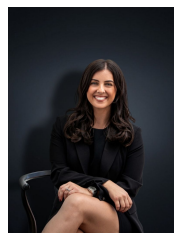
4 2 2

Beautifully presented & ready to meet its next owner this home is sure to impress you upon inspection! In a very popular position within walking distance to Parklands and amenities, meeting a young family's needs is just what this home does!

Within walking distance to Werribee CBD with café's, Shops, Restaurants and Train Station and very importantly zoned for the ever so popular Werribee Secondary College, convenience here does not get any better. Also, only a short distance to reach freeway access heading in each direction to Melbourne CBD or Geelong. Situated on approximately 528 sq m the home offers;

- ? Four spacious bedrooms
- ? Master with walk in robe and ensuite
- ? Separate study / additional living space on entry

Price : \$ 700,000
Land Size : 528 sqm
View : <https://www.ypa.com.au/7361996>



Kirsty Cunningham
0414 344 475



Mitch Smit
0450 913 513



FLOOR PLAN IS PROVIDED AS INDICATIVE LAYOUT ONLY, MEASUREMENTS ARE NOT AVAILABLE, FLOORPLAN IS NOT TO SCALE.
NO GUARANTEES PROVIDED ON ACCURACY

10 Carly Terrace, Werribee