



6 Artesian Walk Werribee VIC

3  2  2 

Located in the sought-after Harpley estate this near new home with immaculate presentation offers the perfect opportunity for those wanting to secure their first home or investment. Upon entry be greeted by a spacious front living room, that flows through to the family/meals area with adjoining hostess kitchen fitted with stone bench tops and 900mm cook top. Upstairs comprises of three fitted bedrooms, master with walk in robe, ensuite and balcony with stunning park views, the remaining two bedrooms are serviced by a central bathroom and separate toilet. Extra features include 4x reverse cycle split systems, upstairs study nook, downstairs powder room and double lock up garage. All this and just over 3 years old this home is sure to impress - enquire today!

Price : \$ 510,000

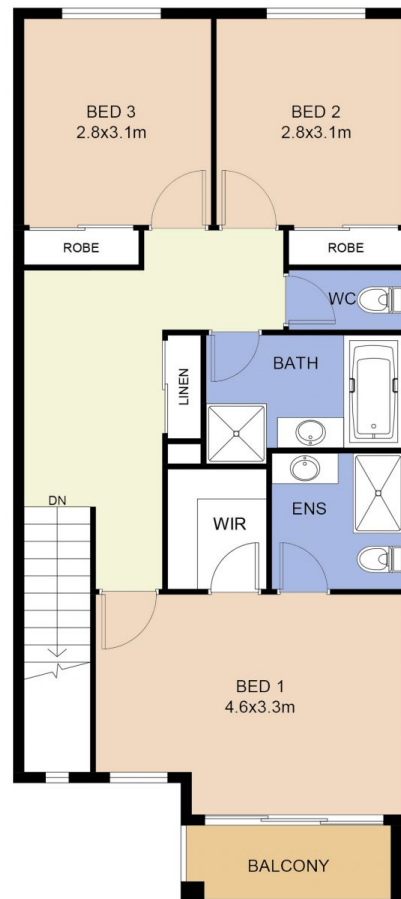
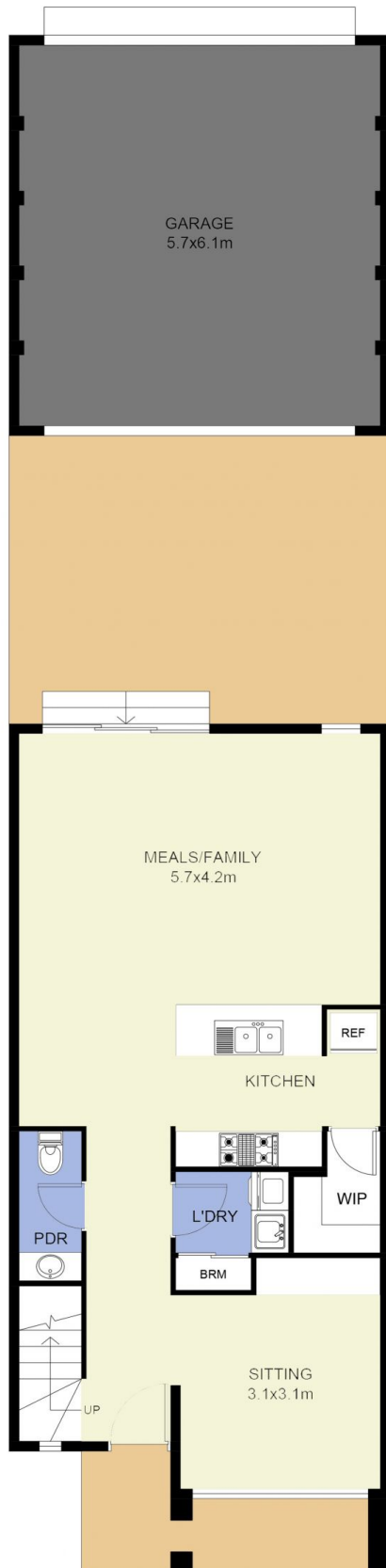
View : <https://www.ypa.com.au/7361993>



Jarrod Loughlin
0405 857 895



Mitch Smit
0450 913 513



FLOOR PLAN IS PROVIDED AS INDICATIVE LAYOUT ONLY, MEASUREMENTS ARE NOT AVAILABLE, FLOORPLAN IS NOT TO SCALE.
NO GUARANTEES PROVIDED ON ACCURACY

6 Artesian Walk, Werribee