



## 2/36 Mortimer Street Werribee VIC

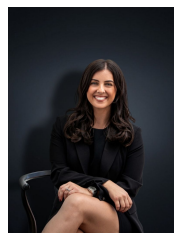
2 1 2

Positioned in a picturesque Riverside location this well-maintained home is within walking distance to Werribee River, Werribee CBD, Werribee Train Station, Cafés, Restaurants, Shops and only a short drive to Freeway Access.

The location here is simply as convenient as it comes and makes the perfect home for First homeowners, downsizers & investors alike. The property itself has been recently refurbished inside and offers;

- ? Two spacious bedrooms
- ? Two-way bathroom with oversized shower
- ? Large separate lounge room area
- ? Kitchen/Meals area
- ? Kitchen boasts quality stainless steel appliances, dishwasher & stone benchtops

**Price** : \$ 482,000  
**Land Size** : 205 sqm  
**View** : <https://www.ypa.com.au/7361982>



**Kirsty Cunningham**  
0414 344 475



FLOOR PLAN IS PROVIDED AS INDICATIVE LAYOUT ONLY, MEASUREMENTS ARE NOT AVAILABLE, FLOORPLAN IS NOT TO SCALE.  
NO GUARANTEES PROVIDED ON ACCURACY

**2/36 Mortimer Street, Werribee**