



3 Osprey Street Werribee VIC

3 1 2

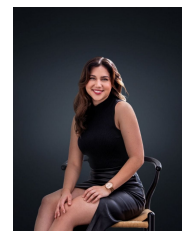
Located in one of the most central pockets of Werribee within a short walk to Pacific Werribee shopping centre and Werribee CBD with Restaurants, Cafes and Werribee Station sits this fantastic opportunity. Also, within close proximity to reputable schools and local parks. Positioned on approximately 580m² offering a great opportunity for first homeowners or investors looking to expand their portfolio with potential for future redevelopment/subdivision (STCA). This fantastic home offers the next lucky owners.

Price : \$ 520,000
Land Size : 580 sqm
View : <https://www.ypa.com.au/7361977>

- ? Three spacious bedrooms with built in robes
- ? Central bathroom and separate toilet
- ? Large formal living room
- ? Kitchen with ample storage space overlooking the meals
- ? Covered outdoor entertaining area
- ? Ducted heating, evaporative cooling and boxed



Mitch Smit
0450 913 513



Trinity Osorio Schwarz
0426 356 739



FLOOR PLAN IS PROVIDED AS INDICATIVE LAYOUT ONLY, MEASUREMENTS ARE NOT AVAILABLE, FLOORPLAN IS NOT TO SCALE.
NO GUARANTEES PROVIDED ON ACCURACY

3 Osprey Street, Werribee