



27 Mortimer Street Werribee VIC

3 2 1

Enviably positioned just moments from Watton Street, Werribee's CBD, train station and local schools, this exquisite townhouse captivates with luxurious open plan living, contemporary design and absolute convenience where you may simply forget the car. You'll discover a very short walk for your morning coffee at a choice of cafes and restaurants, bakeries and Watton St shopping precinct. It is an easy walk or cycle to schools, sporting and leisure clubs, parks and Werribee River walking tracks just around the corner. This 3 bedroom, 2.5 bathroom home optimise a wonderful sense of space with fresh décor, clean lines and open reverse living with a large north facing balcony. Extras include a superior kitchen featuring a stone bench, stainless steel appliances, Caesarstone benchtops, high ceilings, reverse cycle heating and cooling, single remote garage plus your own title with no ownerscorp!

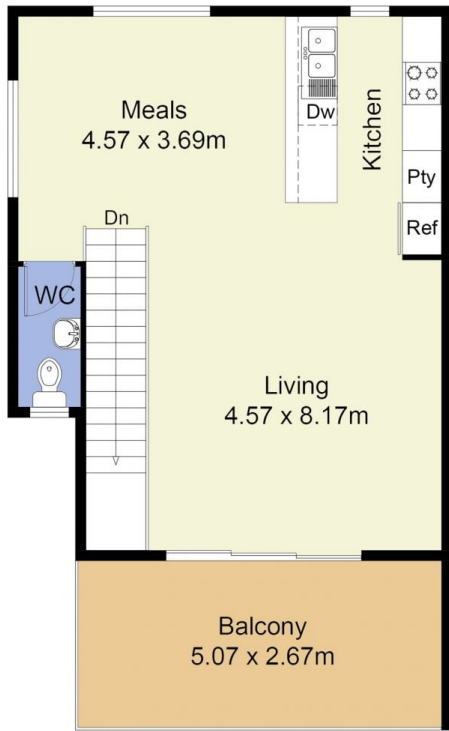
Price : \$ 576,666
Building Size : 180 sqm
Land Size : 164 sqm
View : <https://www.ypa.com.au/7361972>



James Antonio
0401 889 248



Petar Krnjeta
0406912320



FIRST FLOOR PLAN



GROUND FLOOR PLAN

FLOOR PLAN IS PROVIDED AS INDICATIVE LAYOUT ONLY, MEASUREMENTS ARE NOT AVAILABLE, FLOORPLAN IS NOT TO SCALE.
NO GUARANTEES PROVIDED ON ACCURACY

27 Mortimer Street, Werribee