



9 Eldorado Court Wyndham Vale VIC

3 1 2

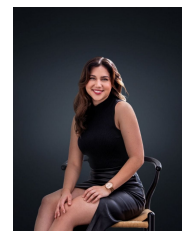
Located in a family friendly court location offering a spacious and flowing floor plan this home is well suited to first home buyers and investors alike. Situated next door to a kid friendly park and within walking distance to so many amenities. You are positioned in a dominant location within walking distance to Iramoo Primary School, Public Transport, Local Shops & Parklands. Situated on approximately 617m² of land and offering the next lucky owners.

Price : \$ 500,000
Land Size : 617 sqm
View : <https://www.ypa.com.au/7361951>

- ?Three bedrooms
- ?Central bathroom with separate toilet
- ?Spacious L shape living room
- ?Kitchen overlooking the meals area
- ?Established mature gardens front and back
- ?Large covered outdoor entertaining area
- ?Carport with access through to the garage



Mitch Smit
0450 913 513



Trinity Osorio Schwarz
0426 356 739



FLOOR PLAN IS PROVIDED AS INDICATIVE LAYOUT ONLY, MEASUREMENTS ARE NOT AVAILABLE, FLOORPLAN IS NOT TO SCALE.
 NO GUARANTEES PROVIDED ON ACCURACY

9 Eldorado Court, Wyndham Vale