



6 Searle Court Werribee VIC

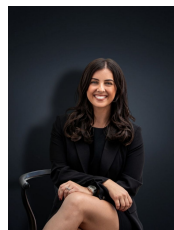
3 4 2

Sprawling over approximately 1176 sq m of prime Werribee land this unrivalled private and serene north facing riverfront location is where everybody wants to be. A premium position blended with a sophisticated design brings you this exceptional opportunity and is undoubtedly sure to impress!

Inside, you are instantly greeted by the custom designed entrance door and soaring 9ft ceilings. The beautifully light filled formal living and dining space overlooks the flora & fauna conservation reserve. Connecting the two living spaces is the warmth from the Heat & Glo two-way gas fireplace. The floor coverings are a combination of pure wool carpet and beautiful sandstone tiles which seamlessly flow into the outdoor area. The kitchen boasts quality granite benchtops, glass splashback, double draw dishwasher, Insinkerator and a huge walk-in butler's pantry

Land Size : 1176 sqm

View : <https://www.ypa.com.au/7361949>



Kirsty Cunningham
0414 344 475



James Antonio
0401 889 248

