



1/30 Tarneit Road Werribee VIC

3 1 1

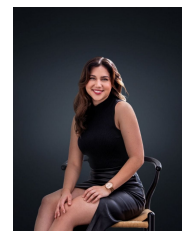
This priceless gem is perfectly suited for anyone who is looking to downsize, invest or simply looking to enter the market for a first home. Full of character this beautiful home is situated approximately 850m to Werribee Train Station and is Minutes from Werribee CBD with Shops, Cafes & Restaurants. The original home boasts beautiful original floorboards, Art Deco decorative ceilings and decorative corncicing throughout with loads on offer including.

- ? Three large spacious bedrooms all with built in robes
- ? Central bathroom
- ? Large living room upon entry
- ? Spacious updated kitchen with gas cooking appliances
- ? Decked outdoor entertaining area and low maintenance gardens
- ? Off street parking by way of a carport
- ? Ducted heating and evaporative cooling

Price : \$ 490,000
Land Size : 265 sqm
View : <https://www.ypa.com.au/7361945>



Mitch Smit
0450 913 513



Trinity Osorio Schwarz
0426 356 739



FLOOR PLAN IS PROVIDED AS INDICATIVE LAYOUT ONLY, MEASUREMENTS ARE NOT AVAILABLE, FLOORPLAN IS NOT TO SCALE.
NO GUARANTEES PROVIDED ON ACCURACY

1/30 Tarneit Road, Werribee