

13 Baden Drive Hoppers Crossing VIC

3 1 1

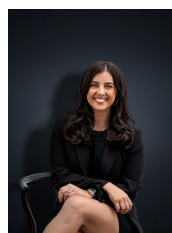
This home is situated right in the centre of Hoppers Crossing, throw away your car keys you are now minutes to everything! Located within walking distance to Hoppers Crossing Train Station, Pacific Werribee Shopping Centre, Cafés, Restaurants, Shops, Parklands, Reputable Schools & Sporting Clubs. You are also minutes to freeway access to get you to Melbourne CBD within 30 mins!

This home is versatile and suitable to all potential buyers in the market - first home, investment opportunities or potentially a development site in a prime position (STCA).

This meticulously presented triple fronted home is offered to the market for the first time this and proudly boasts;

- ? Three spacious bedrooms with built in robes
- ? Central updated bathroom

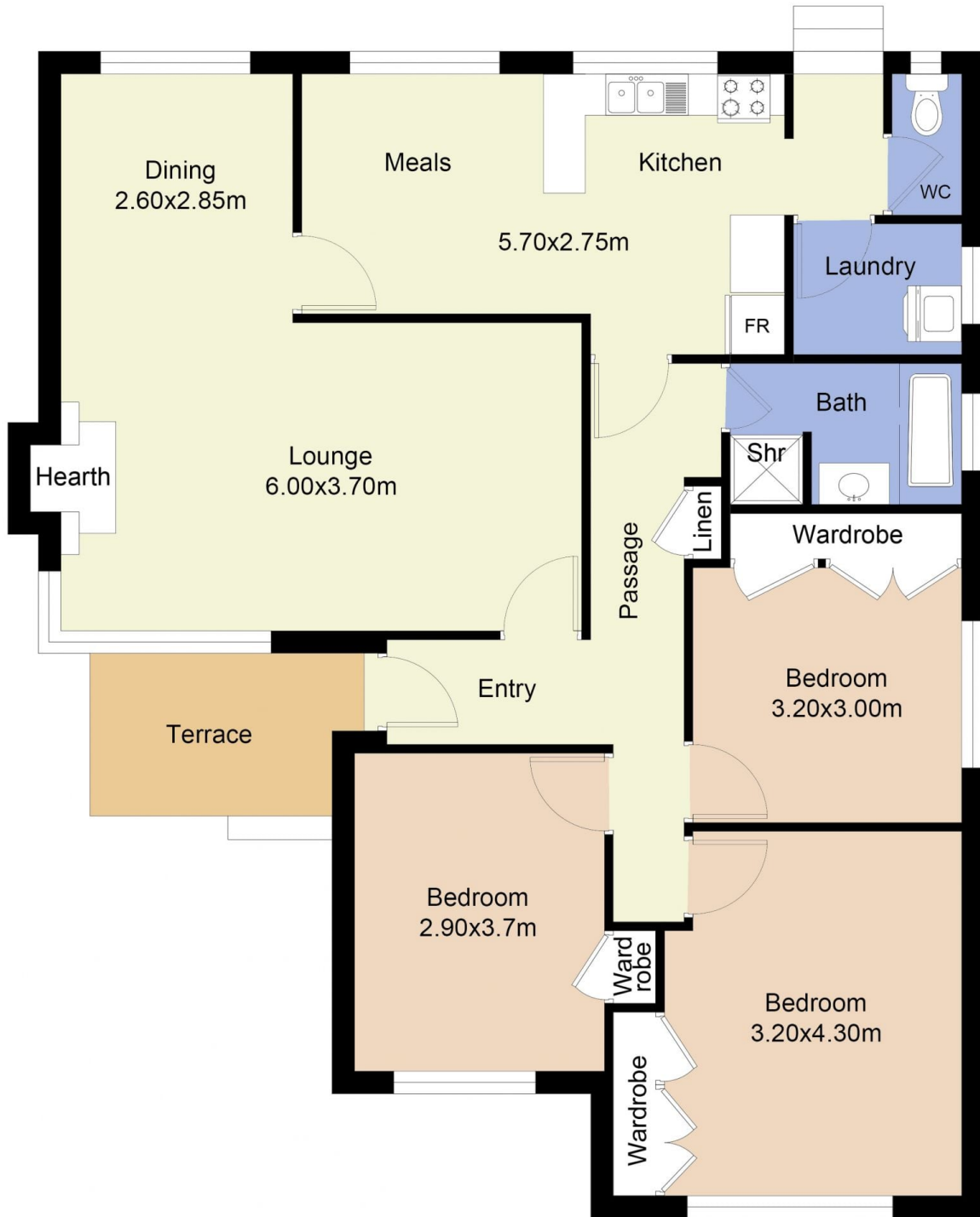
Price : \$ 600,000
Land Size : 528 sqm
View : <https://www.ypa.com.au/7361943>



Kirsty Cunningham
0414 344 475



James Christou
0450 733 302



FLOOR PLAN IS PROVIDED AS INDICATIVE LAYOUT ONLY, MEASUREMENTS ARE NOT AVAILABLE, FLOORPLAN IS NOT TO SCALE. NO GUARANTEES PROVIDED ON ACCURACY

13 Baden Drive, Hoppers Crossing