



## 3/4 Trinca Court Werribee VIC

2 1 1

This wonderful home boast one of the best positions Werribee has to offer on the popular south side of Werribee. Suiting a first home buyer, investor, or a downsizer, located within walking distances to Werribee's town centre, train station, Werribee River walking tracks, Werribee Secondary, McKillop College, Corpus Christi and Werribee Primary Schools. Only a minute's drive to get onto the freeway and reach both Melbourne and Geelong in approximately 35 minutes!

**Price** : \$ 481,000

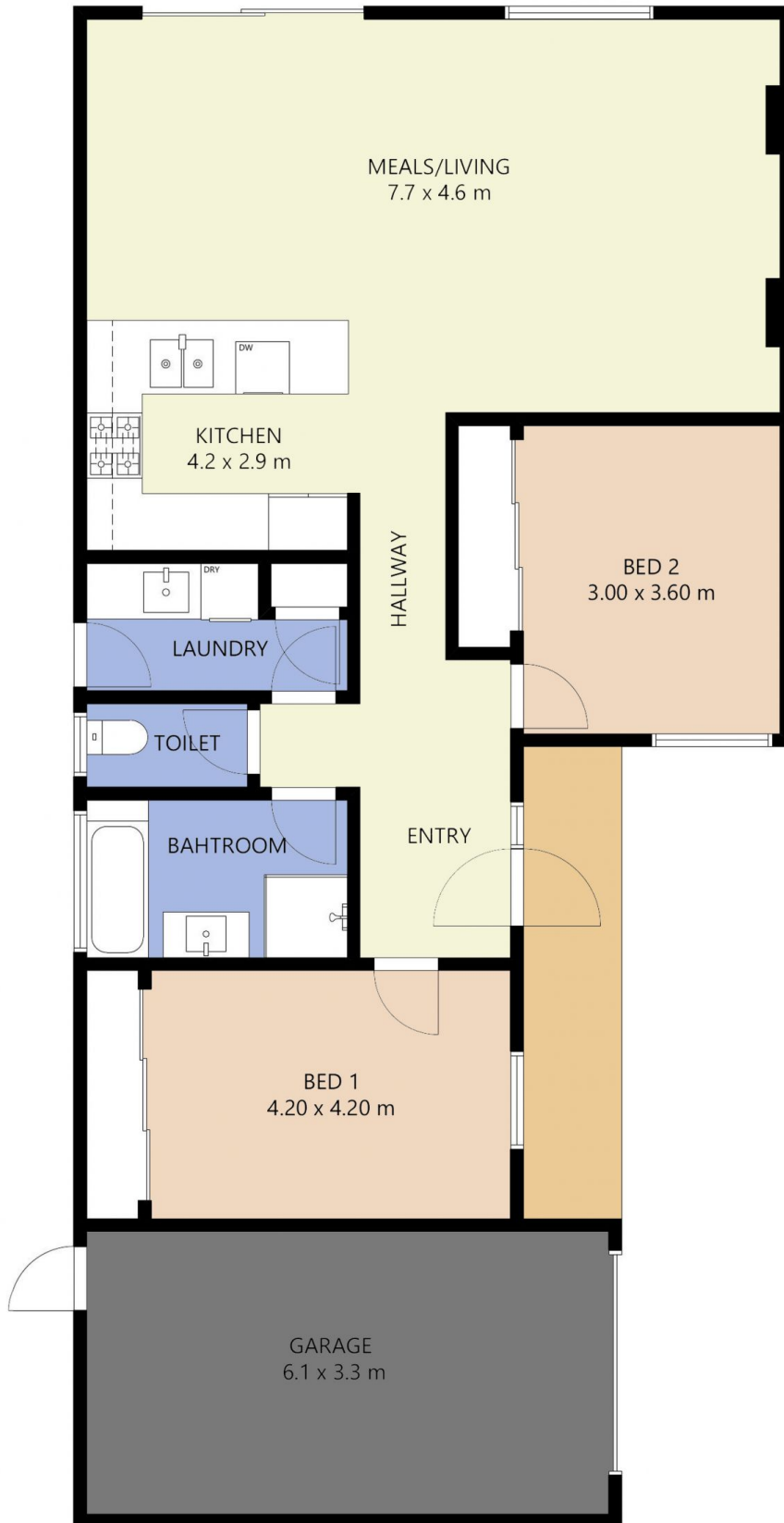
**View** : <https://www.ypa.com.au/7361939>



**Jarrod Loughlin**  
0405 857 895

This home offers the next owners.

- ? Two Spacious bedrooms both with BIRs
- ? Central bathroom
- ? Open plan kitchen, meals and living arrangement
- ? Stainless appliances, 900mm Oven
- ? Heating /Cooling



FLOOR PLAN IS PROVIDED AS INDICATIVE LAYOUT ONLY, MEASUREMENTS ARE NOT AVAILABLE, FLOORPLAN IS NOT TO SCALE.  
NO GUARANTEES PROVIDED ON ACCURACY

3/4 Trinca Court, Werribee