



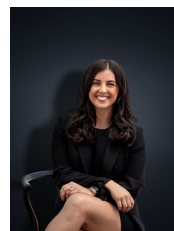
34 Margaret Street Werribee VIC

2 1 1

You cannot get closer and better positioned than right here! A rare opportunity to renovate or redevelop this amazing opportunity at 34 Margaret Street, Werribee. Full of character this beautiful home positions you only 750m to Werribee Train Station and is Minutes from Werribee CBD with Shops, Cafes & Restaurants. With additional potential to utilise the entire corner site and build two brand new homes this rare opportunity is something you should get very excited about as they seldom become available. The original home boasts beautiful original floorboards, Art Deco decorative ceilings and decorative corncicing throughout with loads on offer including;

- ? Two large bedrooms
- ? Central bathroom
- ? Large living space with adjacent dining/study area
- ? Updated kitchen with gas cooking appliances
- ? Split system heating & cooling

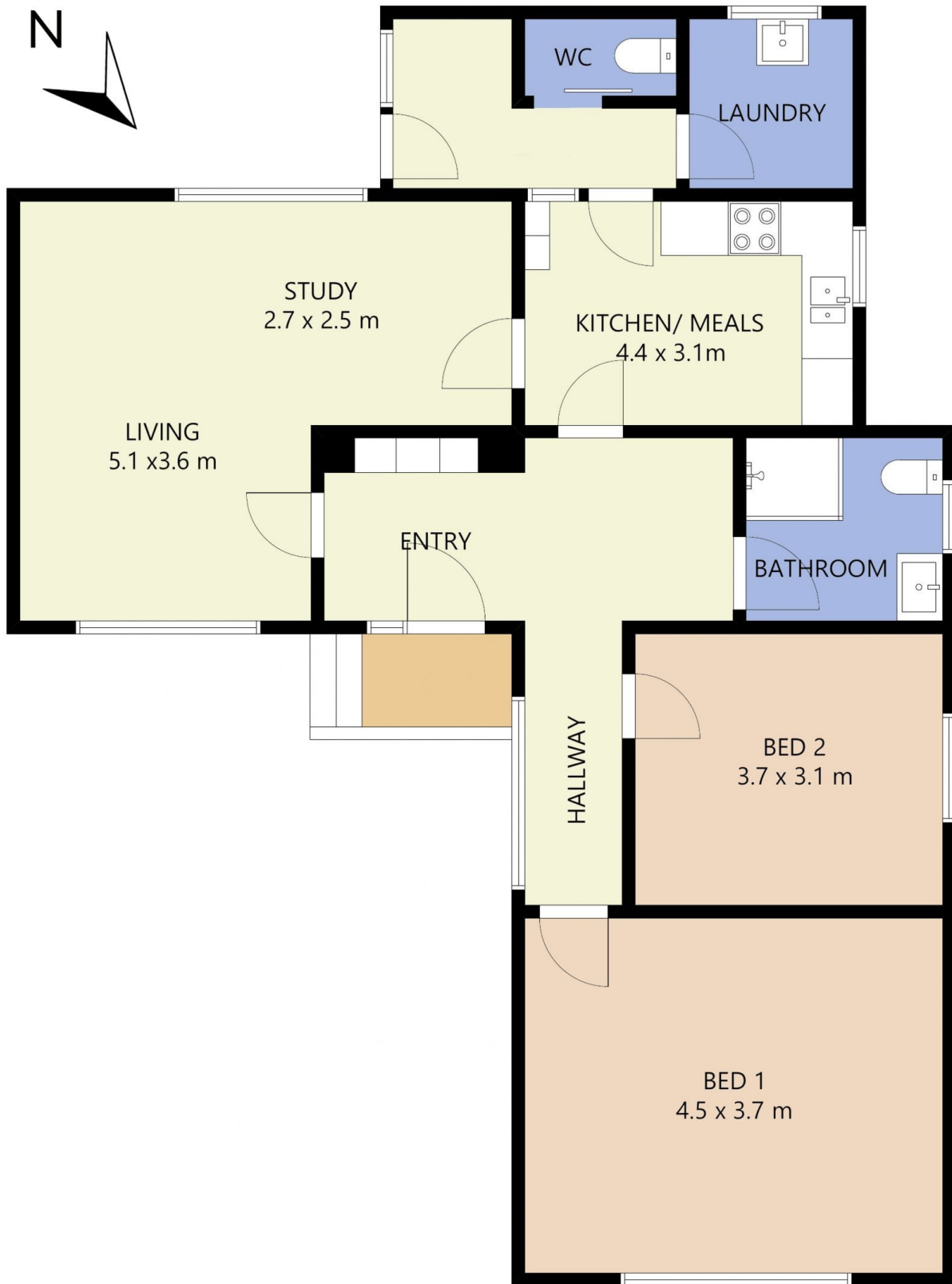
Price : \$ 435,000
Land Size : 385 sqm
View : <https://www.ypa.com.au/7361909>



Kirsty Cunningham
0414 344 475



Mitch Smit
0450 913 513



FLOOR PLAN IS PROVIDED AS INDICATIVE LAYOUT ONLY, MEASUREMENTS ARE NOT AVAILABLE, FLOORPLAN IS NOT TO SCALE.
NO GUARANTEES PROVIDED ON ACCURACY

34 Margaret Street, Werribee