



5 Currawong Court Werribee VIC

3 2 1

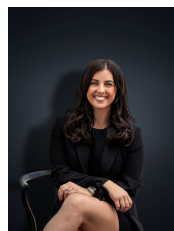
Situated on a 713m² (approx.) allotment and comprising of three generously sized bedrooms; this gorgeous home could be a great addition to your investment portfolio or a perfect place to start in the market.

Price : \$ 580,000
Land Size : 713 sqm
View : <https://www.ypa.com.au/7361870>

This home features built in robes in all three bedrooms, a central bathroom as well as a master en-suite, fully equipped kitchen with an abundance of cupboard space and a large living area which is spacious enough for the whole family to enjoy!

Moving outside you'll be greeted by a huge, easy to maintain backyard area perfect for entertaining family and friends all year round!

Extras include a single car garage towards the back of the property, landscaped front garden, cathedral ceilings,



Kirsty Cunningham
0414 344 475



James Christou
0450 733 302



FLOOR PLAN IS PROVIDED AS INDICATIVE LAYOUT ONLY, MEASUREMENTS ARE NOT AVAILABLE, FLOORPLAN IS NOT TO SCALE.
NO GUARANTEES PROVIDED ON ACCURACY

5 Currawong Court, Werribee