



2/14 Acheron Crescent Werribee VIC

4 2 1

This fabulous home is sure to set hearts racing positioned perfectly in a quiet location on the south side of Werribee with easy access to the M1 to Melbourne, walking distance to all of these; Mackillop Catholic college, Corpus Christi, Werribee secondary college, Werribee Primary, Werribee train station, Watton Street cafes and restaurants are all within minutes from this beautiful property.

Sitting on approximately 305m² of land this wonderful home offers the next lucky owner the following;

- ? Three bedrooms with built in robes
- ? Master bedroom with walk in robe and ensuite
- ? Potential 4th bedroom/study or can be utilised as a living room
- ? Kitchen, meals and living arrangement
- ? Central bathroom with separate toilet
- ? Gas ducted heating

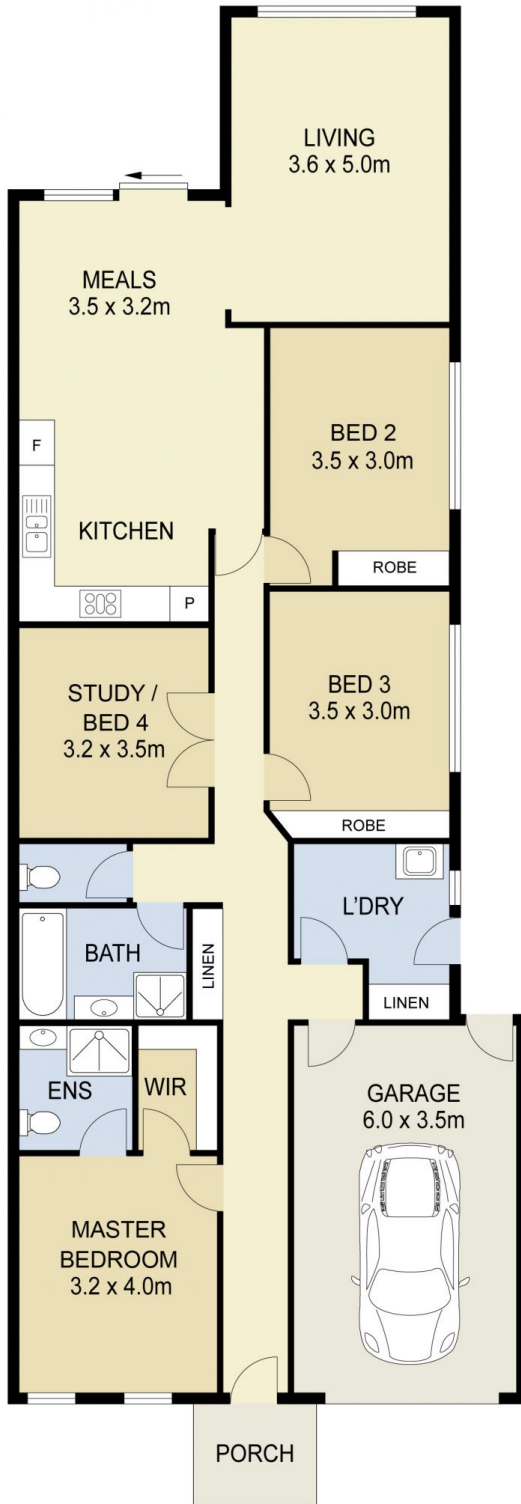
Price : \$ 515,000

Land Size : 305 sqm

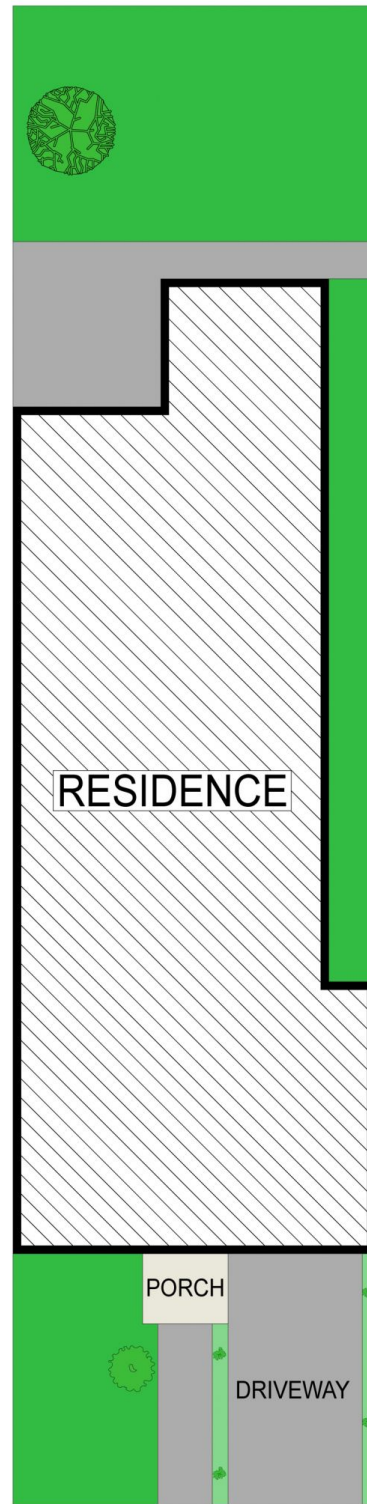
View : <https://www.ypa.com.au/7361862>



Mitch Smit
0450 913 513

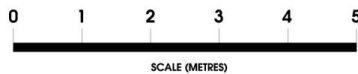


FLOOR PLAN



SITE PLAN

2/14 Acheron Crescent, Werribee



DISCLAIMER: ALL DIMENSIONS ARE AN APPROXIMATION ONLY AND NO GUARANTEE IS GIVEN WITH RESPECT TO ACCURACY.