



6 Madison Drive Hoppers Crossing VIC

3 1 1

LOVELY HOME IN A HIGHLY SOUGHT-AFTER LOCATION

Positioned on a spacious allotment of approximately 554 sq m this property is located in the highly sought-after Woodville Estate, with all local amenities at very easy reach to you.

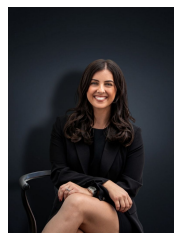
With major landmarks nearby including Pacific Werribee Shopping Centre (1.5km approx), Aquapulse Indoor Pool & Gym (1.1km approx) and Hoppers Crossing Train Station (1km approx). Also within the Mackillop CRC, Hoppers Crossing Secondary, Woodville PS and St Peters School zones.

This home presents endless possibilities to renovate & make this your dream home, develop/subdivide (STCA) or

Price : \$ 553,000

Land Size : 554 sqm

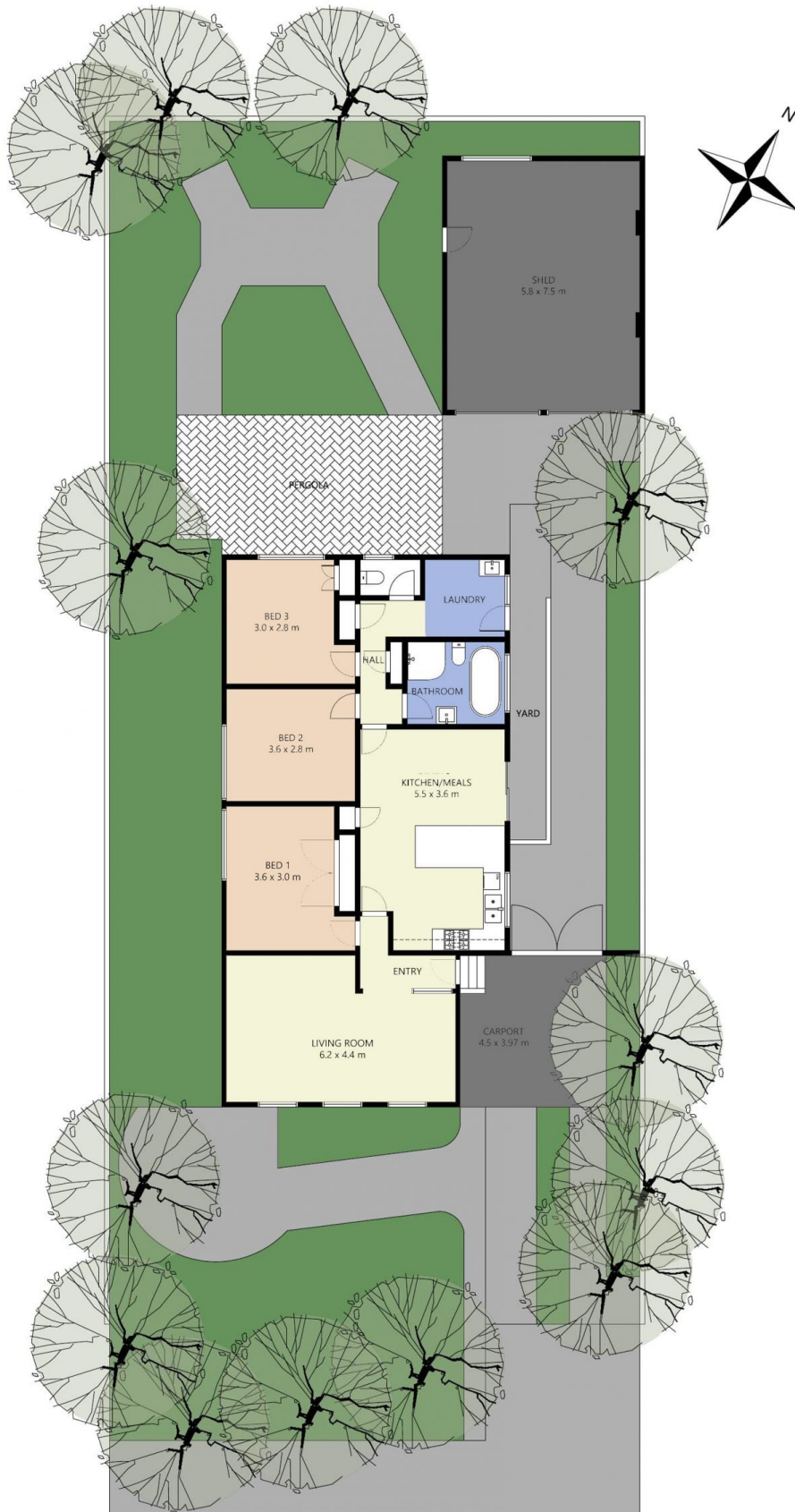
View : <https://www.ypa.com.au/7361840>



Kirsty Cunningham
0414 344 475



James Antonio
0401 889 248



SITE PLAN IS PROVIDED AS INDICATIVE LAYOUT ONLY, MEASUREMENTS ARE NOT AVAILABLE, SITE PLAN IS NOT TO SCALE.
 NO GUARANTEES PROVIDED ON ACCURACY

6 Madison Drive, Hoppers Crossing