



1/5-6 Trinca Court Werribee VIC

3  2  1 

PLEASE REGISTER YOUR INTEREST IN ATTENDING A PRIVATE INSPECTION BY CONTACTING THE AGENT.

FACE MASKS ARE REQUIRED TO BE WORN BY ALL INSPECTION ATTENDEES.

This stunning townhouse is situated on the popular South Side of Werribee and is the complete package for any first homeowner or investor.

Providing an open plan meals/family area overlooked by the fully equipped kitchen featuring stone bench tops and modern stainless-steel appliances, whilst outside offers a generous sized, low maintenance garden and to top it off you can entertain family and friends with the fully equipped pizza oven. Just around the corner is a fantastic separate lounge room which opens out into a fully decked front

Price : \$ 540,000
Land Size : 200 sqm
View : <https://www.ypa.com.au/7361835>



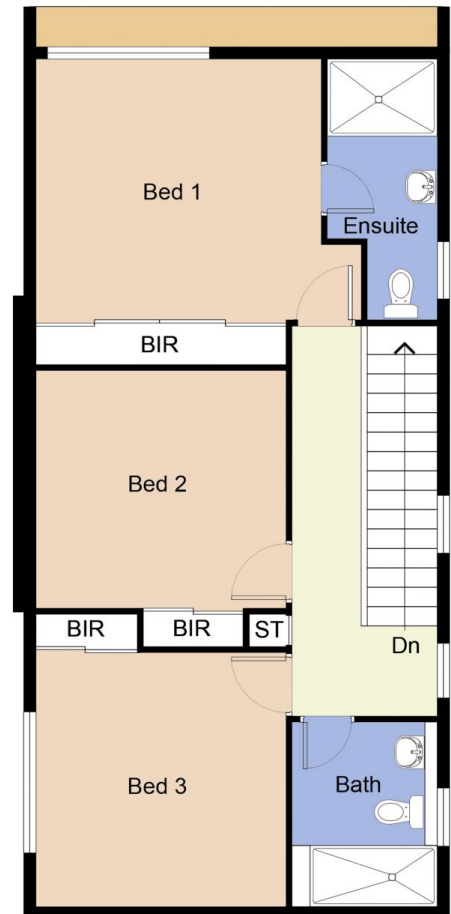
Jarrod Loughlin
0405 857 895



James Antonio
0401 889 248



GROUND FLOOR PLAN



FIRST FLOOR PLAN

FLOOR PLAN IS PROVIDED AS INDICATIVE LAYOUT ONLY, MEASUREMENTS ARE NOT AVAILABLE, FLOORPLAN IS NOT TO SCALE.
NO GUARANTEES PROVIDED ON ACCURACY

1/5-6 Trinca Court, Werribee