



12 Clay Avenue Hoppers Crossing VIC

3 1 2

Situated in the ever so popular Mossfiel estate of Hoppers Crossing, the home is located close to all the amenities you will ever want and need. Pacific Werribee is located (approx. 1.4km) away and Hoppers Crossing train station, a short 5-minute drive away (approx. 1.9km) The home is also within walking distance to reputable schools including Mossfiel Primary, Hoppers Crossing Secondary School and St Peters Catholic Primary School. Parklands, sporting complexes and local shops are only a stone's throw away. Also approved plans and permits for two 4 bedroom townhouses with 2 masters!

With no compromise on space and situated on a massive 586m² the home provides you, the next lucky owner with the following:

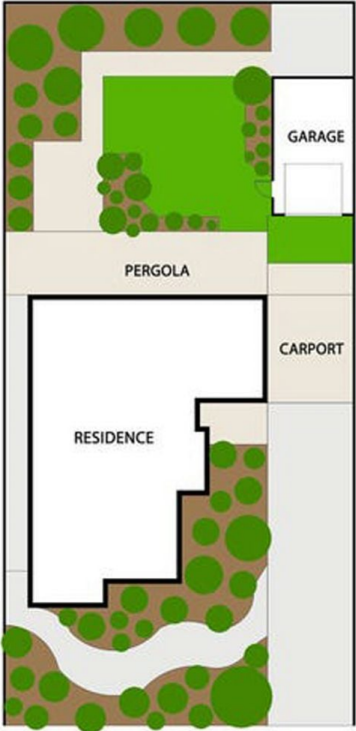
- ? Three spacious bedroom all with built in robes
- ? Large living room with gas fireplace

Price : \$ 590,000
Land Size : 586 sqm
View : <https://www.ypa.com.au/7361834>



Mitch Smit
0450 913 513

12 Clay Avenue, Hoppers Crossing



FLOOR PLAN IS PROVIDED AS INDICATIVE LAYOUT ONLY, MEASUREMENTS ARE NOT AVAILABLE, FLOORPLAN IS NOT TO SCALE.
NO GUARANTEES PROVIDED ON ACCURACY