



15 Ruby Place Werribee VIC

3 1 1

Situated in a quiet and tucked away location in the heart of Werribee, and within close proximity to the Werribee Train Station (approx. 2.1km), bus stops, schools, Pacific Werribee (approx. 3km) and other amenities Werribee has to offer lies this immaculately presented family home.

Price : \$ 468,000
Land Size : 411 sqm
View : <https://www.ypa.com.au/7361811>

Situated on a generous allotment of 411m² (approx.), savvy investors and first home buyers - your search is over with this immaculate three-bedroom family home that includes:

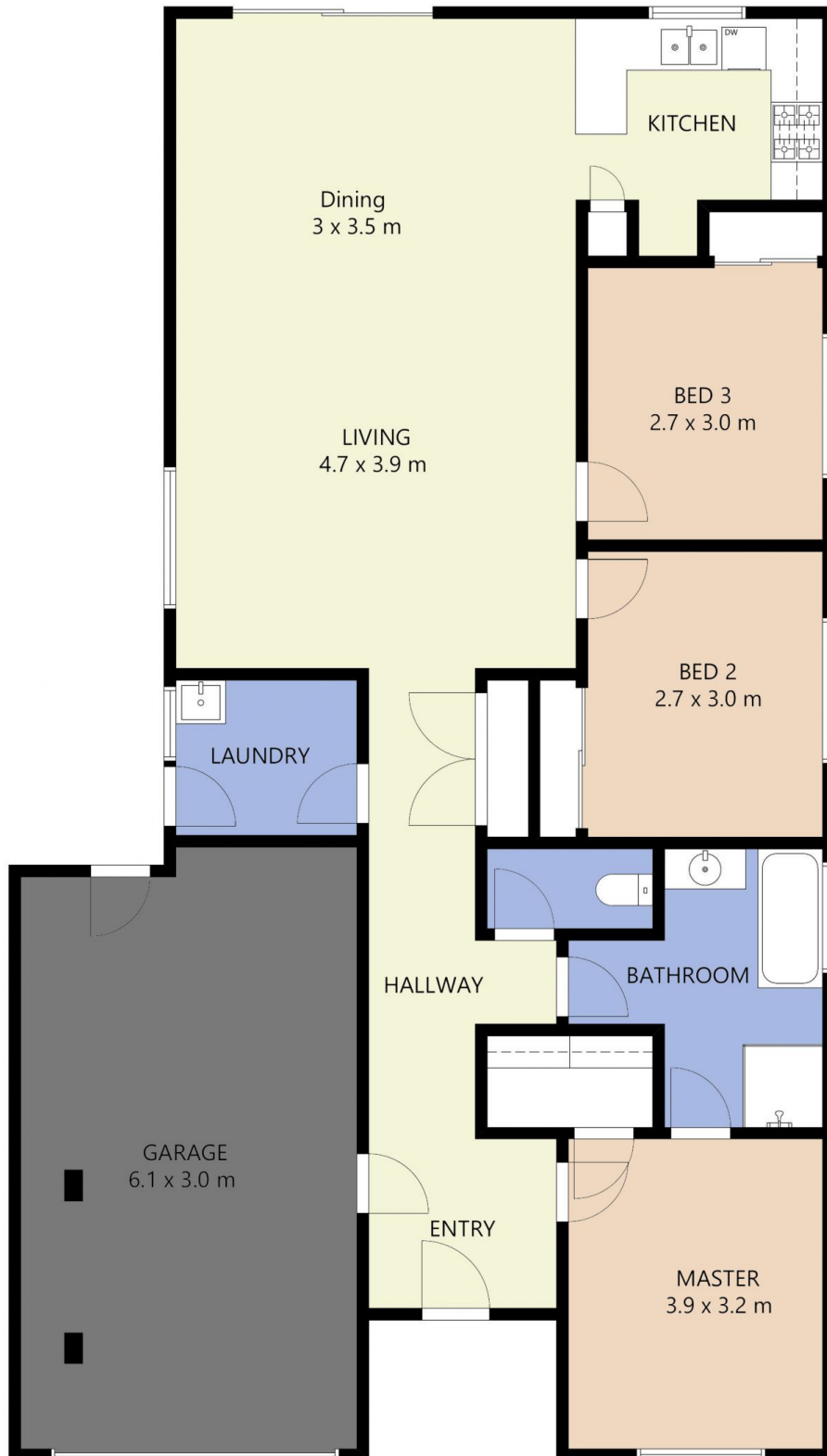
- ? Three fitted bedrooms
- ? Central updated bathroom
- ? New carpet
- ? Kitchen dining area that opens up to a quaint living area
- ? Outdoor entertaining area running the width of the property
- ? Additional features include a brand new split system and



James Christou
0450 733 302



Mitch Smit
0450 913 513



FLOOR PLAN IS PROVIDED AS INDICATIVE LAYOUT ONLY, MEASUREMENTS ARE NOT AVAILABLE, FLOORPLAN IS NOT TO SCALE.
NO GUARANTEES PROVIDED ON ACCURACY

15 Ruby Place, Werribee