



43 Loyola Road Werribee VIC

3 1 2

A solidly built lovely home on an approximate 611m² allotment with immaculate presentation, character and charm. Positioned perfectly in the most convenient location, south of Synnot Street and only a short distance to primary/secondary schools, public transport, Werribee CBD's cafe strip/restaurants and easy freeway access nearby.

Presenting spacious fitted bedrooms with central bathroom, formal lounge, kitchen and dining that steps out to an outdoor pool area. Some of the many features this fantastic home has to offer are floating floorboards through, outdoor pool, large garage to the back of the property, updated kitchen, freshly painted, gas cooktop, dishwasher and gorgeous matured landscaped gardens.

A solid investment in a tranquil location that will set hearts

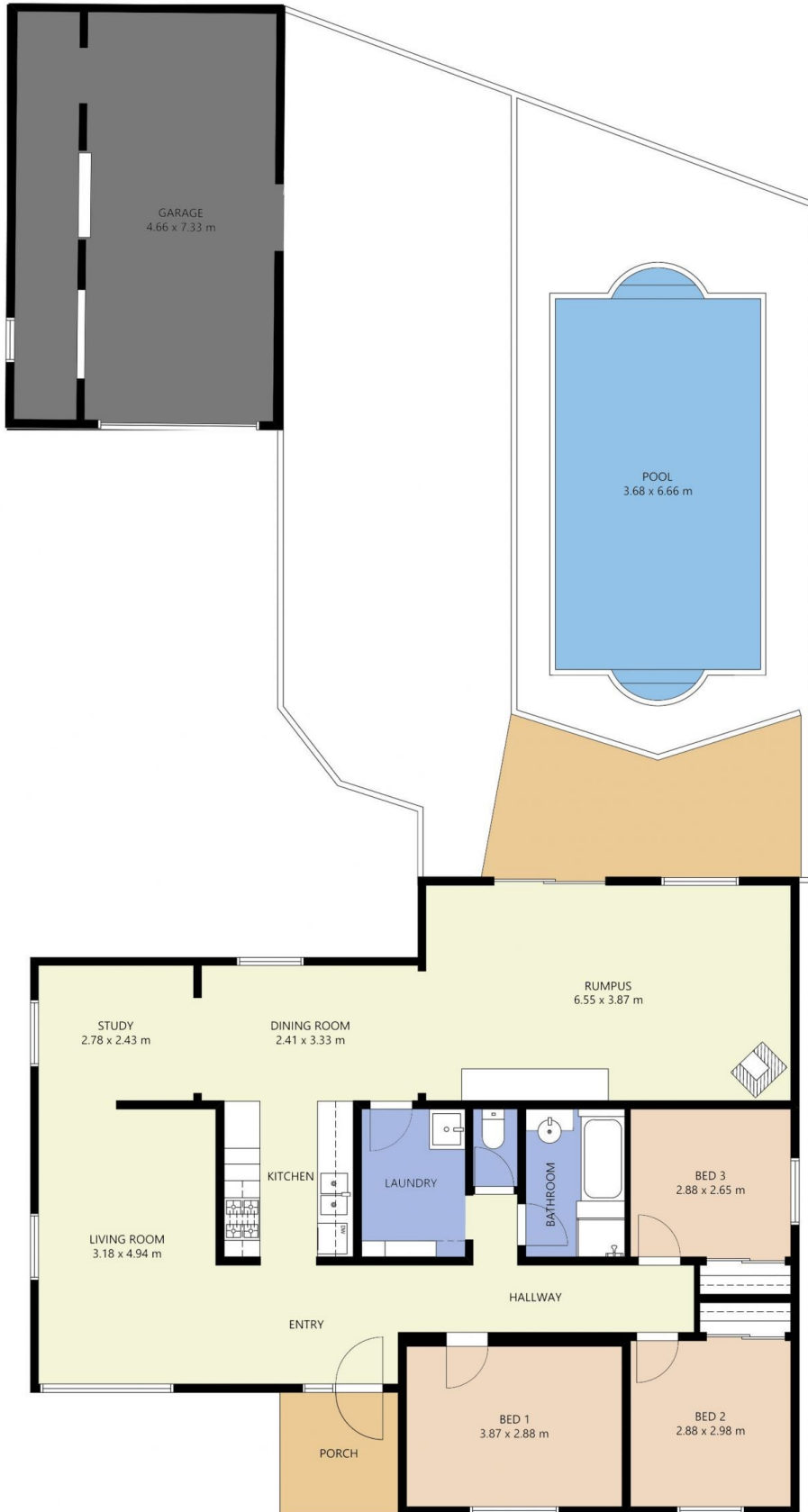
Price : \$ 542,000
Land Size : 611 sqm
View : <https://www.ypa.com.au/7361803>



James Christou
0450 733 302



Mitch Smit
0450 913 513



FLOOR PLAN IS PROVIDED AS INDICATIVE LAYOUT ONLY, MEASUREMENTS ARE NOT AVAILABLE, FLOORPLAN IS NOT TO SCALE.
NO GUARANTEES PROVIDED ON ACCURACY

43 Loyola Road, Werribee