



## 35 Intervale Drive Wyndham Vale VIC

3 1 2

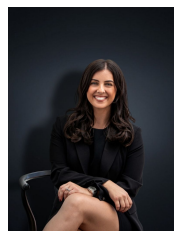
Offering a spacious & flowing floor plan this home is well suited to first home buyers & investors alike. Within walking distance to so many amenities you are situated in a dominant location within walking distance to Iramoo Primary School, Public Transport, Local Shops & Parklands.

You are also positioned in the middle of both Werribee CBD & Railway station & Manor Lakes Train Station & Shopping centre - the options are endless!

Positioned on a very generous allotment of approximately 538 sq m the property offers;

- ? Three spacious bedrooms
- ? Open plan kitchen/meals & family living arrangement
- ? Second living space with access to the outdoor entertaining area

**Price** : \$ 441,000  
**Land Size** : 538 sqm  
**View** : <https://www.ypa.com.au/7361800>



**Kirsty Cunningham**  
0414 344 475