



15 Kasem Drive Werribee VIC

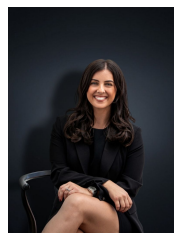
3 2 1

Renovated with style & quality as the main priority this beautifully presented family home has more to offer than most. From the minute you arrive you will appreciate the charming street appeal; the manicured gardens stand out & these first impressions make the world of difference.

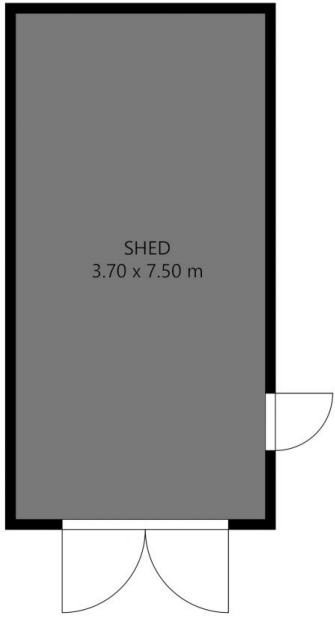
Located in a central and popular Werribee position, conveniently you are central to a lot of amenities. Only a short 5-minute drive you will reach Pacific Werribee with Cafes, Restaurants, High end shopping & Cinemas.

Within walking distance you have reputable schools including Westgrove Primary & Bethany Catholic Primary School, only a short distance as well to Wyndham Central College & Heathdale Christian College, the list goes on? You are also within walking distance to Werribee River walking & bike tracks, parklands (both Latham Street

Price : \$ 540,000
Land Size : 513 sqm
View : <https://www.ypa.com.au/7361763>



Kirsty Cunningham
0414 344 475



FLOOR PLAN IS PROVIDED AS INDICATIVE LAYOUT ONLY, MEASUREMENTS ARE NOT AVAILABLE, FLOORPLAN IS NOT TO SCALE.
NO GUARANTEES PROVIDED ON ACCURACY

15 Kasem Drive, Werribee