



3 Acton Place Wyndham Vale VIC

3 1 1

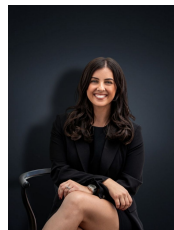
This home simply ticks all the boxes for a young family, first home buyer or investor .

Offering a spacious & flowing floor plan there is nothing that you need to do to move straight in! Within walking distance to so many amenities you are situated in a dominant location within walking distance to Iramoo Primary School, Public Transport, Local Shops & Parklands. You are also positioned in the middle of both Werribee CBD & Railway station & Manor Lakes Train Station & Shopping centre - the options are endless!

Positioned on a very generous allotment of approximately 625 sq m the property offers;

- ? Three spacious bedrooms with built in robes
- ? Large two-way renovated bathroom accessible from the master

Price : \$ 460,000
Building Size : 129.92 sqm
Land Size : 625 sqm
View : <https://www.ypa.com.au/7361761>



Kirsty Cunningham
0414 344 475



FLOOR PLAN IS PROVIDED AS INDICATIVE LAYOUT ONLY, MEASUREMENTS ARE NOT AVAILABLE, FLOORPLAN IS NOT TO SCALE.
NO GUARANTEES PROVIDED ON ACCURACY

3 Acton Place, Wyndham Vale