



1/31-33 Deutgam Street Werribee VIC

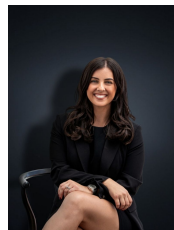
2 1 1

This super spacious abode is the perfect entry home into Werribee's thriving market in one of the most sought-after locations. Within walking distance, you will reach Werribee CBD with reputable Schools, Café's, Local Shops & Werribee Train station. Only minutes from freeway access the location makes your commute to Melbourne CBD a breeze!

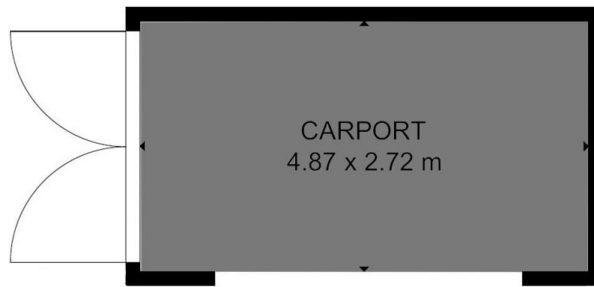
Price : \$ 389,000
Building Size : 92.8 sqm
Land Size : 167 sqm
View : <https://www.ypa.com.au/7361756>

Downsizers, Investors & First home buyers take note this versatile home will not last long with full street frontage the property offers;

- ? Spacious master bedroom with built in robe
- ? Large second bedroom
- ? Separate formal lounge room upon entry
- ? Kitchen/Meals area
- ? Renovated kitchen with quality stainless steel appliances
- ? Large central bathroom



Kirsty Cunningham
0414 344 475



FLOOR PLAN IS PROVIDED AS INDICATIVE LAYOUT ONLY, MEASUREMENTS ARE NOT AVAILABLE, FLOORPLAN IS NOT TO SCALE.
NO GUARANTEES PROVIDED ON ACCURACY

1/31-33 Deutgam Street, Werribee