



6 Duclair Avenue Werribee VIC

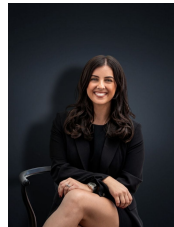
4 2 2

At only 1.5 years old, this home is a true masterpiece! A top-of-the-range Orion Homes build compete with all the bells and whistles. Situated in the new Harpley estate in Werribee, this residence has a contemporary design and is a magnificent example of modern architecture. This is the ideal home for any family with a keen eye for comfort and style.

This immaculate home has so much to offer. The house is fully equipped with 4 spacious bedrooms, all of which have built-in-robos. The master boasts a sizable walk-in in robe and a huge en-suite, complete with a double shower and vanity! The kitchen boasts broad working spaces on 20mm stone benchtops, sleek cabinetry providing a wealth of storage space and features modern fittings such as a double sink, stainless steel appliances with Fisher and Paykel DishDrawer Dishwasher and a 900mm oven. There

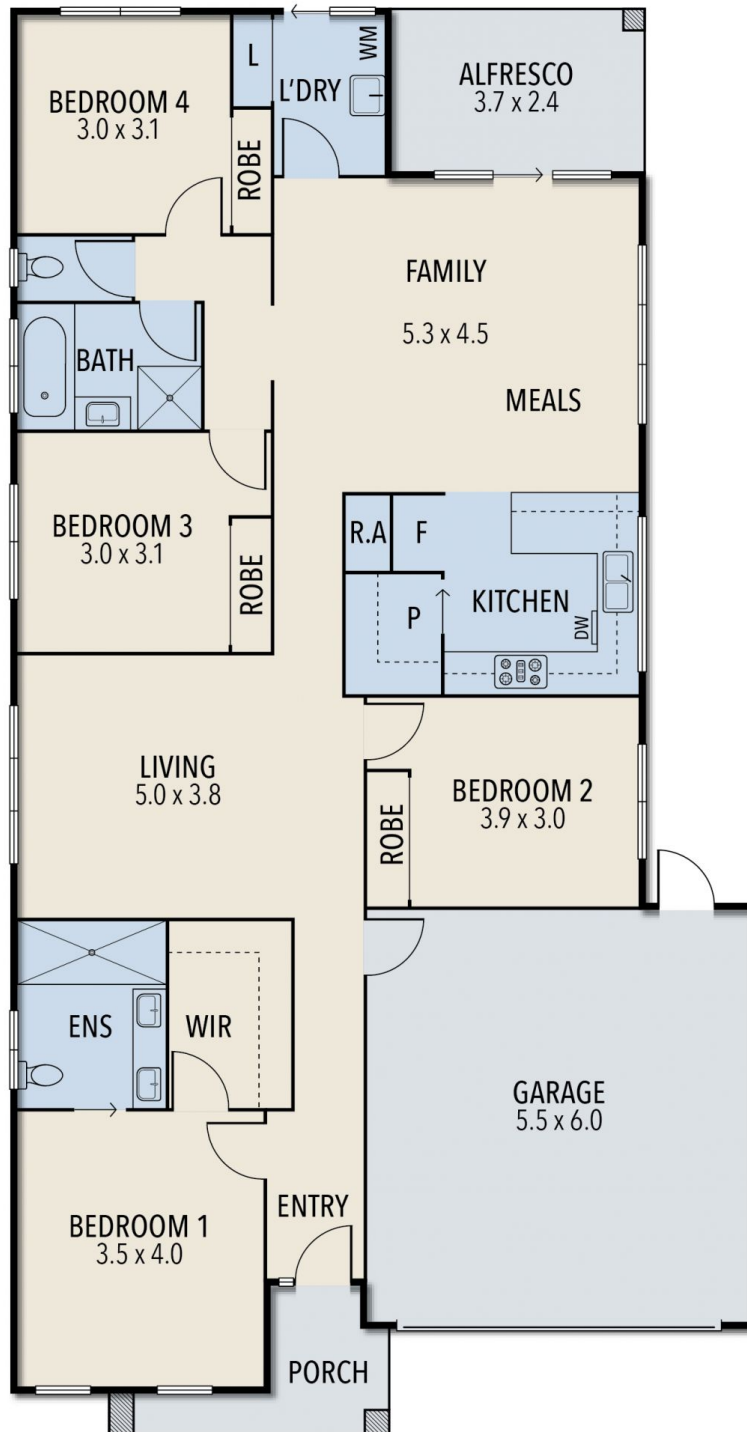
Price : \$ 571,000

View : <https://www.ypa.com.au/7361728>



Kirsty Cunningham
0414 344 475

6 DUCLAIR AVENUE, WERRIBEE



ALL STATED DIMENSIONS ARE APPROXIMATE ONLY. PARTICULARS GIVEN ARE FOR GENERAL INFORMATION ONLY AND DO NOT CONSTITUTE ANY REPRESENTATION ON THE PART OF THE VENDOR AND AGENT.