

2 Songlark Crescent Werribee VIC

3  1  1 

Pristine presentation from front to back, this gorgeous home could be a great addition to your investment portfolio or a perfect place to start in the market.

Situated on a 562m² (approx.) allotment and comprising of three generously sized bedrooms completed with built in robes, a central renovated bathroom with stunning floor to ceiling tiles and a large light filled, fully equipped kitchen with an abundance of cupboard space. The updated kitchen overlooks one of the multiple living zones which is spacious enough for the whole family to enjoy!

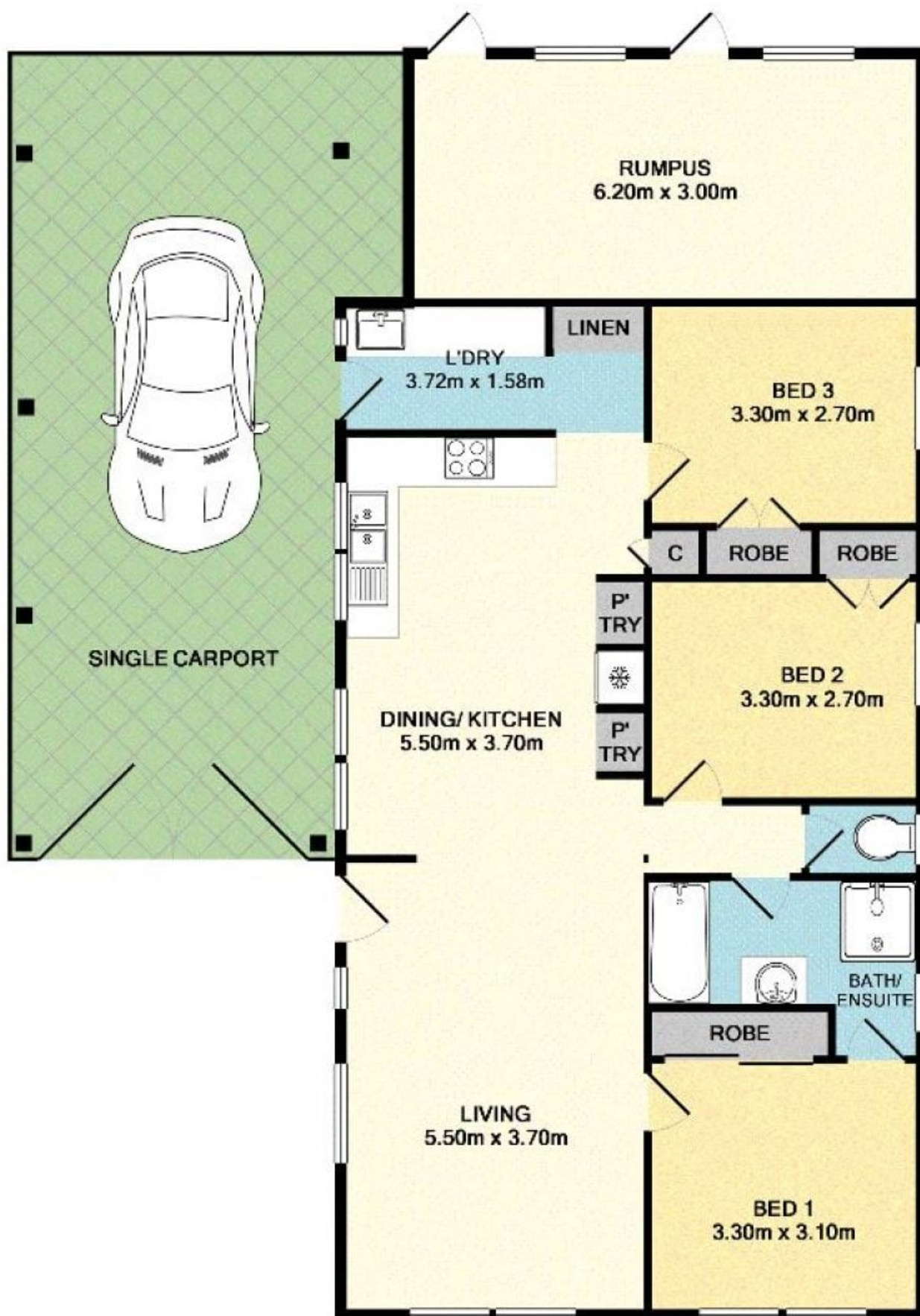
Moving outside you'll be greeted by a huge, easy to maintain backyard and carport/ pergola area perfect for entertaining family and friends all year round!

Extras include a single car carport, quality laminate floors,

Price : \$ 480,000
Land Size : 562 sqm
View : <https://www.ypa.com.au/7361717>



James Christou
0450 733 302



TOTAL APPROX. FLOOR AREA 104.9 SQ.M. (1130 SQ.FT.)

Whilst every attempt has been made to ensure the accuracy of the floor plan contained here, measurements of doors, windows, rooms and any other items are approximate and no responsibility is taken for any error, omission, or mis-statement. This plan is for illustrative purposes only and should be used as such by any prospective purchaser. The services, systems and appliances shown have not been tested and no guarantee as to their operability or efficiency can be given.

Made with Metropix ©2015