



1B Hodge Street Werribee VIC

3 2 1

This sensational near new unit is perfect for the first home buyer, investor or anyone seeking a low maintenance lifestyle on the south side of Werribee. Located Walking distance to Watton Street, the Werribee River and its walking tracks the location really sells itself.

The home features 3 fitted bedrooms, master with WIR and full ensuite, open plan living, central family bathroom and all the extras such as; high ceilings, ducted heating, stainless steel appliances, stone benchtops and remote garage. With established landscaping this magnificent home will meet your every need.

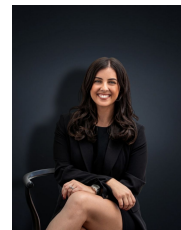
(PHOTO ID REQUIRED AT OPEN FOR INSPECTION)

'At YPA Estate Agents, our service will move you'

Price : \$ 527,500
Building Size : 157.76 sqm
Land Size : 266 sqm
View : <https://www.ypa.com.au/7361710>

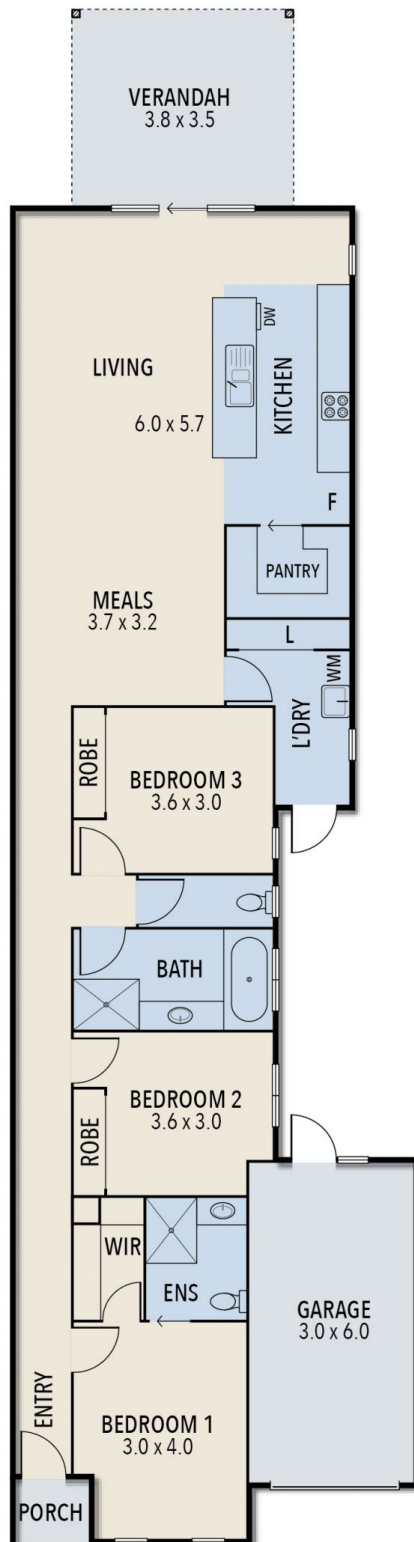


James Antonio
0401 889 248



Kirsty Cunningham
0414 344 475

1B HODGE STREET, WERRIBEE



ALL STATED DIMENSIONS ARE APPROXIMATE ONLY. PARTICULARS GIVEN ARE FOR GENERAL INFORMATION ONLY AND DO NOT CONSTITUTE ANY REPRESENTATION ON THE PART OF THE VENDOR AND AGENT.