

4 Myoora Street Werribee VIC

3  2  2 

This wonderful opportunity sits you right in the best part of Harpley. Located minutes from the tranquil Parklands and Walking tracks and only a short distance to the future Primary School & Waterfront Town Centre!

Price : \$ 455,500

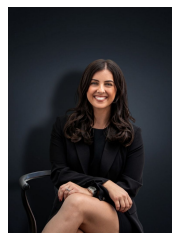
Land Size : 313 sqm

View : <https://www.ypa.com.au/7361704>

This booming estate offers nothing but the best in family living & lifestyle! With a flowing open plan design this young & modern home is perfect for first home buyers, downsizers & investors alike!

The property offers;

- ? Three spacious bedrooms
- ? Master bedroom with WIR & ensuite
- ? Open plan kitchen/meals & living space
- ? Kitchen boasts quality stainless steel appliances, dishwasher, gas cooktop & stone benchtops
- ? Central bathroom

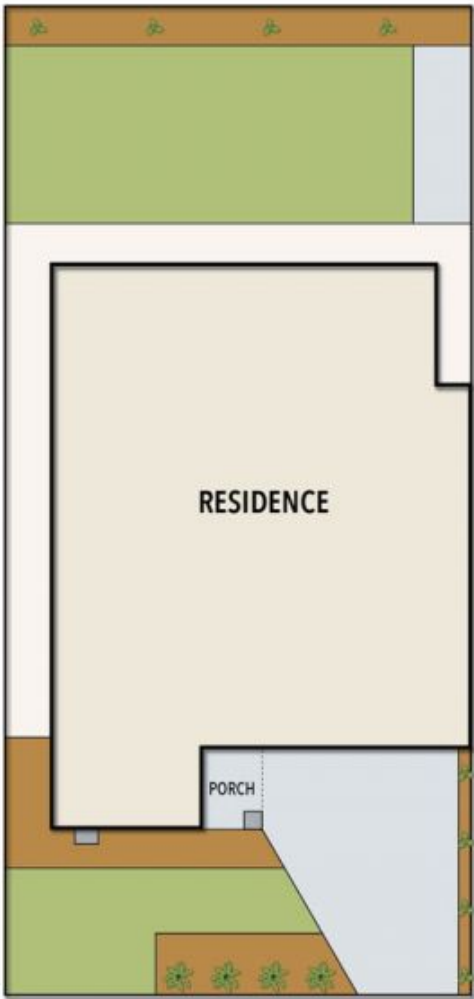


Kirsty Cunningham
0414 344 475



Mitch Smit
0450 913 513

4 MYOORA STREET, WERRIBEE



ALL STATED DIMENSIONS ARE APPROXIMATE ONLY. PARTICULARS GIVEN ARE FOR GENERAL INFORMATION ONLY AND DO NOT CONSTITUTE ANY REPRESENTATION ON THE PART OF THE VENDOR AND AGENT.