



## 768 Armstrong Road Manor Lakes VIC

4 2 2

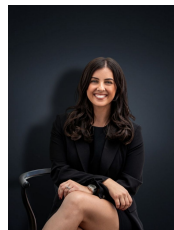
Located in the ever-growing suburb of Manor Lakes, this open plan and contemporary residence is a home that's created to meet every current day need with a beautiful balance of quality and style.

This home presents a great opportunity for a growing family, looking for a low maintenance property, on a generous 740sq m block. Situated within close proximity to Manor Lakes Shopping Centre (1.1km) and Wyndham Vale Train Station (800m) this home is placed in a fantastic position. In a family friendly location, you are also close by to schools, parks & walking tracks.

If you like to entertain then you will certainly be the envy of all of your friends. Everything here sets you up to live the best lifestyle possible and the superb home comprises:

? Four spacious bedrooms

**Price** : \$ 660,000  
**Building Size** : 232 sqm  
**Land Size** : 740 sqm  
**View** : <https://www.ypa.com.au/7361702>



**Kirsty Cunningham**  
 0414 344 475

# 768 ARMSTRONG ROAD, MANOR LAKES



ALL STATED DIMENSIONS ARE APPROXIMATE ONLY. PARTICULARS GIVEN ARE FOR GENERAL INFORMATION ONLY AND DO NOT CONSTITUTE ANY REPRESENTATION ON THE PART OF THE VENDOR AND AGENT.