



## 8 Ivy Court Werribee VIC

4  2  2 

Secluded in a beautiful quiet court location amongst other desirable homes this young, modern & family friendly property has everything that you can need & more!

With an open plan design, it offers multiple living zones & a flowing easy to maintain floor plan. You are situated in the ever so popular KingsLeigh estate with parklands, walking tracks & local amenities right within your immediate reach. Freeway access to reach Melbourne CBD is minutes from your front door & approximately a 35 min drive. You are also only a short 4km's away from Werribee CBD with Cafés, Restaurants & shops.

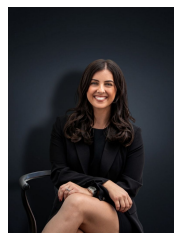
Situated on approximately 504 sq m this home offers nothing but the best in fixtures & fittings and boasts;

- Four large bedrooms
- Master bedroom with fitted walk in robe & large ensuite

**Price** : \$ 665,000

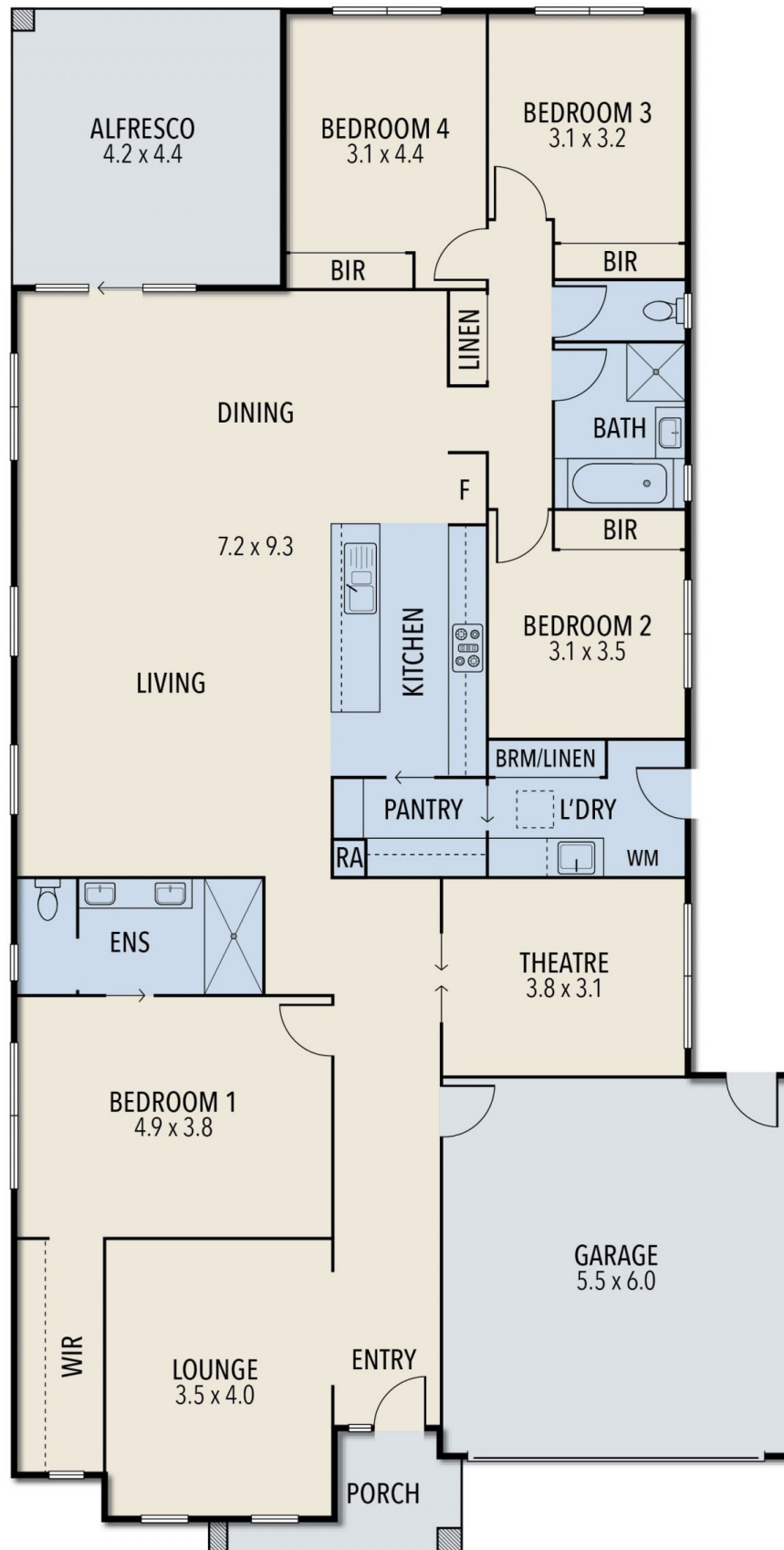
**Land Size** : 505 sqm

**View** : <https://www.ypa.com.au/7361698>



**Kirsty Cunningham**  
0414 344 475

# 8 IVY COURT, WERRIBEE



ALL STATED DIMENSIONS ARE APPROXIMATE ONLY. PARTICULARS GIVEN ARE FOR GENERAL INFORMATION ONLY AND DO NOT CONSTITUTE ANY REPRESENTATION ON THE PART OF THE VENDOR AND AGENT.