

13 Kana Way Werribee VIC

We are proudly presenting rare opportunity to own big block of titled land in highly popular Riverwalk estate of Werribee close to all the amenities you could have.

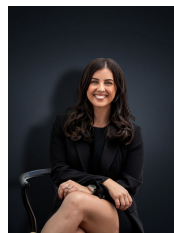
This massive block is approx 587 sqm and ready to build and walkable distance to Riverwalk primary school and childcare, proposed town centre, parklands and very smooth access to freeway towards Geelong and Melbourne CBD.

You and your family can explore the river walk tracks with an abundance of natural bush and wildlife or stroll through the Werribee main street CBD precinct and sporting facilities nearby. Schools, shops, & train station are all within reach. This is truly an opportunity for you to build any size home and call the River walk Estate community home.

Call the agents for exact dimensions and secure your place !

'At YPA Estate Agents, our service will move you'

Price : \$ 358,000
Land Size : 587 sqm
View : <https://www.ypa.com.au/7361675>



Kirsty Cunningham
0414 344 475



James Antonio
0401 889 248