



25 Kittiwake Terrace Werribee VIC

4 2 2

No effort has been spared in this beautiful and recently completed family home. Bordering stunning parklands, unique interconnecting waterways, bike and walk tracks this home sits undeniably in one of the most pristine and rare locations that Werribee now has on offer.

Situated within the booming Harpley Estate with so much on offer including a new kindergarten and council community centre, local medical facilities and soon to come cafes, restaurants, primary school and retail outlets to offer ample shopping opportunities! Currently located only a 5-minute drive to Wyndham Vale Shopping Centre (3km) and a 10-minute drive to Werribee CBD Shopping, Restaurants & Train Station (5.8km).

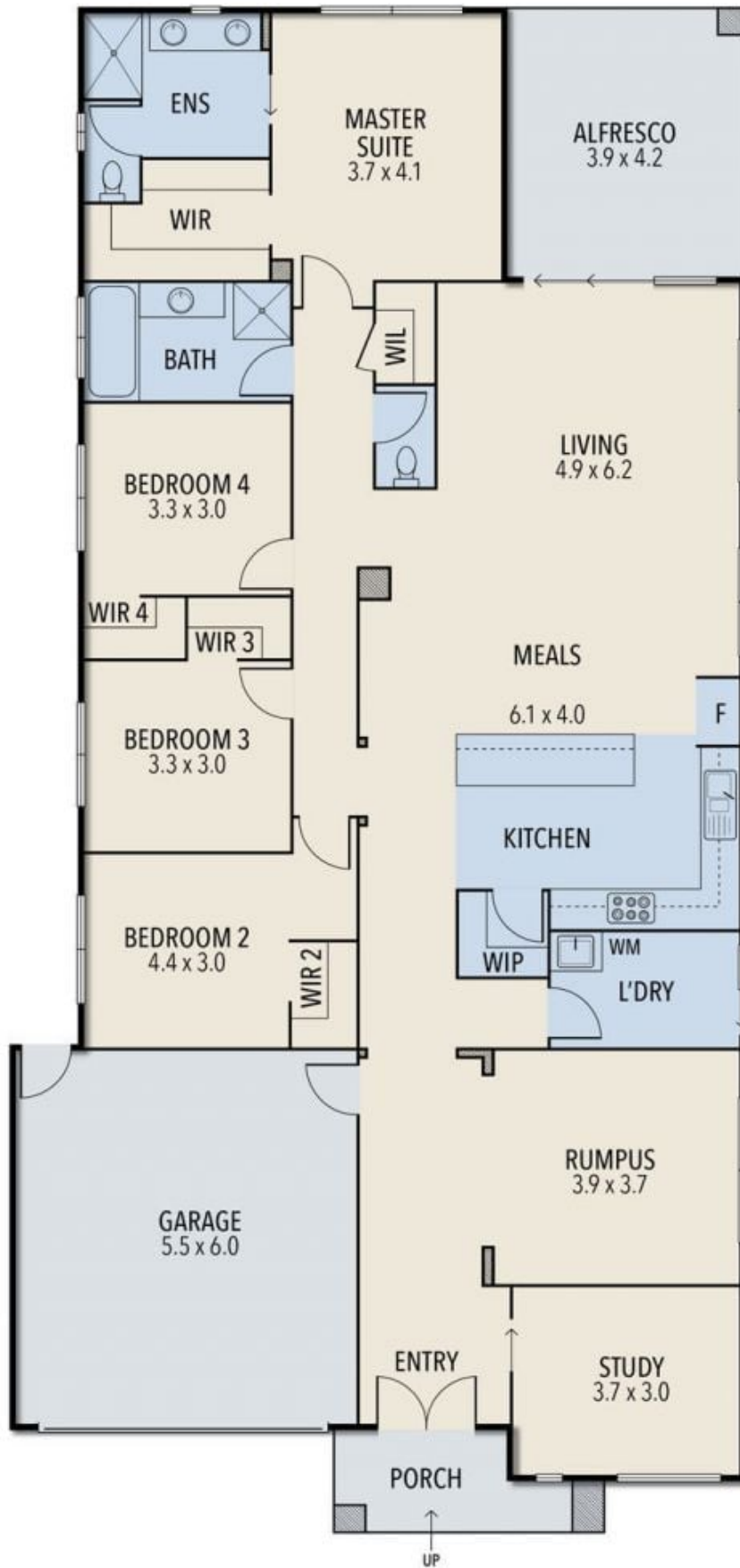
If you have considered building or just want to buy a home with all the bells & whistles, then this will suit your criteria!

Price : \$ 630,000
Land Size : 560 sqm
View : <https://www.ypa.com.au/7361477>



James Christou
0450 733 302

25 KITTIWAKE TERRACE, WERRIBEE



ALL STATED DIMENSIONS ARE APPROXIMATE ONLY. PARTICULARS GIVEN ARE FOR GENERAL INFORMATION ONLY AND DO NOT CONSTITUTE ANY REPRESENTATION ON THE PART OF THE VENDOR AND AGENT.