



## 16 Foster Street Werribee VIC

4 2 2

Take the time to appreciate this gorgeous family home! Situated on a huge 1000m<sup>2</sup> allotment (approx.) and located in arguable one of the most sought-after pockets Wyndham City has to offer, the St Andrews estate in Werribee! This elegant abode was built with both comfort and family in mind!

Nestled in the heart of Werribee, location is truly key when it comes to this spectacular home. Located in close proximity to many local amenities such as, parklands, public transport, childcare centres, reputable schools such as Thomas Chirnside Primary, shopping precincts like Main street Werribee, the Werribee Train station, Eagle stadium, and the Werribee Racecourse.

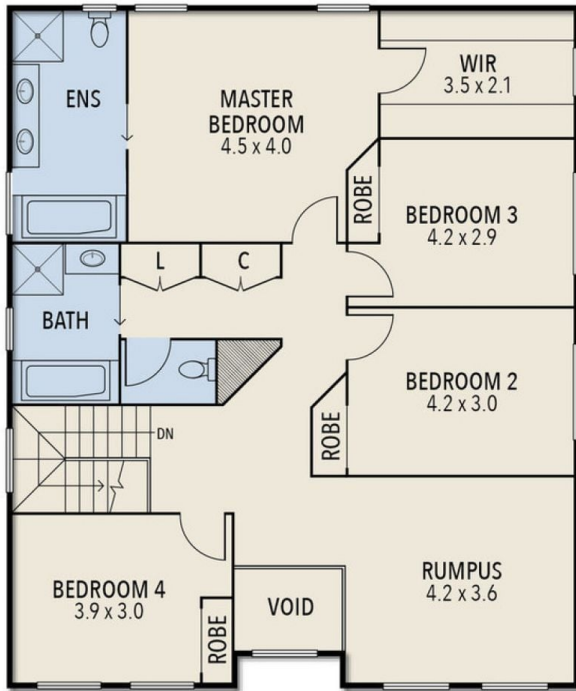
This home is a contemporary masterpiece, a magnificent example of classical architecture and is the ideal home for

**Price** : \$ 756,000

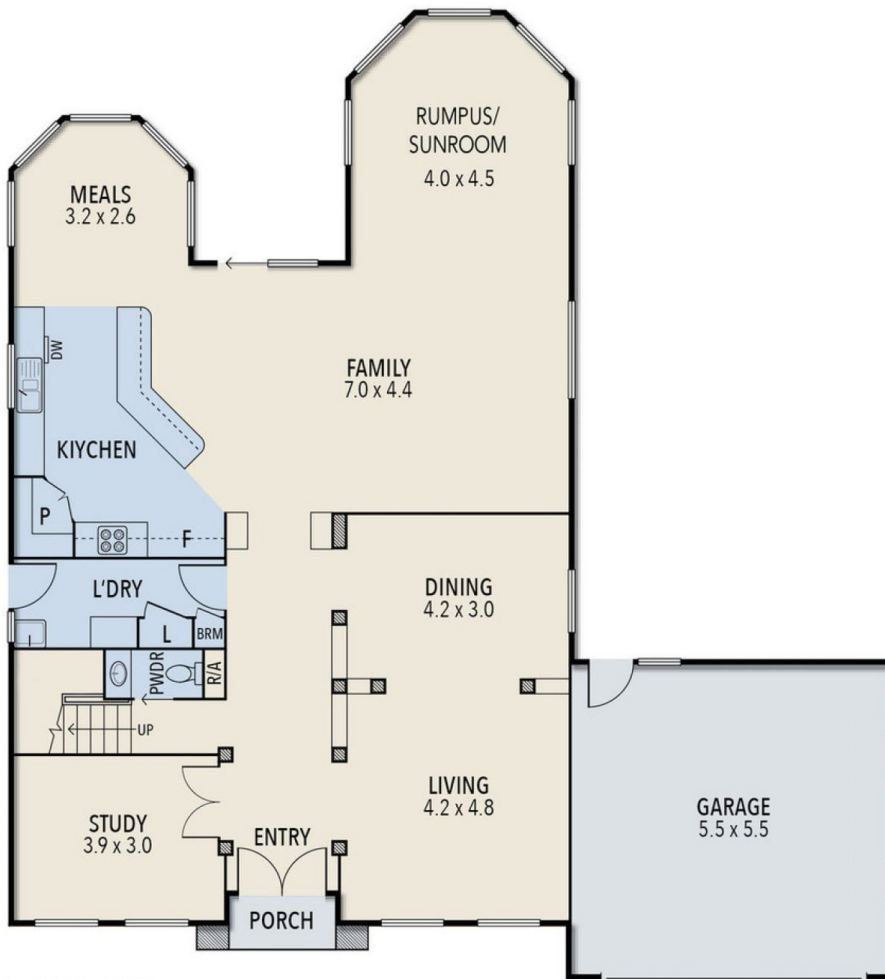
**Land Size** : 1000 sqm

**View** : <https://www.ypa.com.au/7361474>

# 16 FOSTER STREET, WERRIBEE



FIRST FLOOR



GROUND FLOOR

ALL STATED DIMENSIONS ARE APPROXIMATE ONLY. PARTICULARS GIVEN ARE FOR GENERAL INFORMATION ONLY AND DO NOT CONSTITUTE ANY REPRESENTATION ON THE PART OF THE VENDOR AND AGENT.