



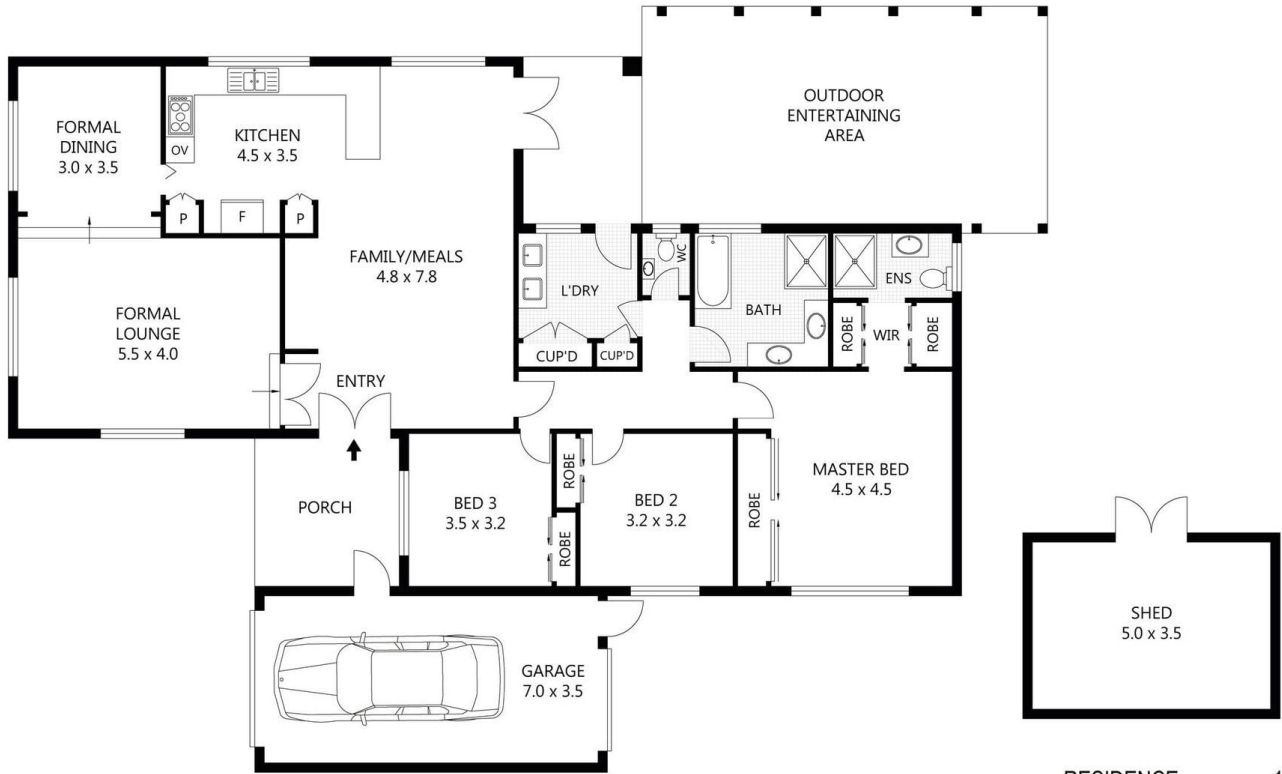
## 29 Aitken Avenue HOPPERS CROSSING VIC

3 2 5

This one is definitely a JUST MOVE IN purchase and not only offers a wonderful selection of quality renovations and workmanship but also offers features you could only have ever hoped for! This fantastic property is positioned in a central location of Hoppers Crossing with only 1.2 km approx. to Hoppers Crossing Train station, 800 meters (approx.) to Bellbridge primary school, 1.3 km(approx..) to Hoppers Crossing Secondary College, 2.8 km (approx..) to Pacific Werribee with smooth access to Princes Highway towards Melbourne CBD make this home so special.

Presenting three large sized fitted bedrooms with formal lounge, formal dining, family and meals area. Magnificently lit naturally with high atriums at the centre point of the home, be spoilt with superior kitchen with granite benchtops and Tasmania blackwood cupboards, family friendly floor plan with multiple living zones.

**Building Size** : 25 sqm  
**Land Size** : 594 sqm  
**View** : <https://www.ypa.com.au/7361473>



RESIDENCE	-	154m <sup>2</sup>
GARAGE	-	25m <sup>2</sup>
ENTERTAINING	-	39m <sup>2</sup>
SHED	-	18m <sup>2</sup>
TOTAL AREA	-	236m <sup>2</sup>



Scale in metres. Indicative only. Dimensions are approximate. All information contained herein is gathered from sources we believe to be reliable. However we cannot guarantee its accuracy and interested parties should rely on their own enquiries.

# 29 Aitken Avenue, Hoppers Crossing