



20 Botanical Drive TRUGANINA VIC

3  2  2 

Located in the ever-growing suburb of Truganina, this open plan and contemporary residence is a home that is created to meet every current day need with a beautiful balance of quality and style. This home presents a great opportunity to cease for first home buyers or investors looking for a low maintenance property within close proximity to Wyndham Village Shopping Centre (2.7km), Westbourne Grammar School (1.5km) and Al Taqwa College (2.4km).

Surrounded by parks, walking tracks, rivers and local amenities including local transport, this home is perfect for those who are seeking convenience and accessibility.

The superb home comprises:

Three bedrooms

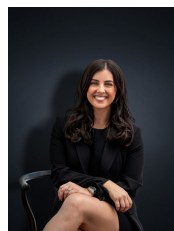
Master with large WIR and ensuite

Remaining bedrooms with built in robes

Building Size : 15 sqm

Land Size : 476 sqm

View : <https://www.ypa.com.au/7361458>



Kirsty Cunningham

0414 344 475