



### 3 Nelse Way WERRIBEE VIC

4  2  2 

Nestled within the young and impressive Riverwalk estate, this stunning newly built custom family home offers nothing but the best in quality and designer features throughout.

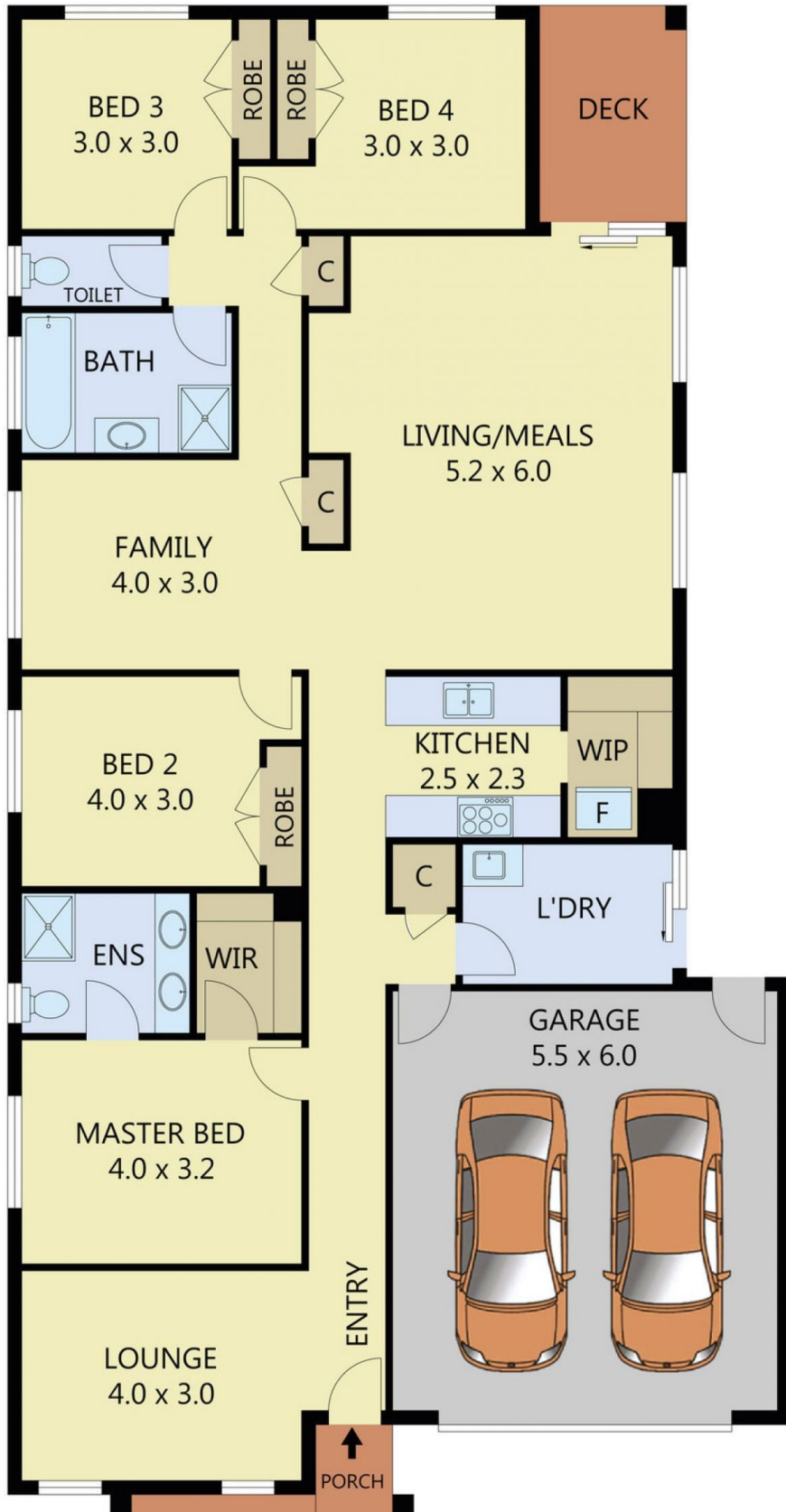
**Land Size** : 396 sqm

**View** : <https://www.ypa.com.au/7361456>

Situated in close proximity to Werribee CBD with Restaurants, Shops, Cafes and reputable schools such as Werribee Secondary school, River walk primary school, you are minutes from all amenities! With close access to the Princes Freeway and Riverwalk water park this home is perfect for the growing family or those that need access to Melbourne CBD within approx. 35km.

Approx.25 squares of this family friendly home boast all the bells and whistles and will save the hassle of building!

This opulent home offers;  
Four spacious bedrooms



Scale in metres. Indicative only. Dimensions are approximate. All information contained herein is gathered from sources we believe to be reliable. However we cannot guarantee its accuracy and interested parties should rely on their own enquiries.

PORCH	-	2m <sup>2</sup>
DECK	-	7m <sup>2</sup>
GARAGE	-	33m <sup>2</sup>
RESIDENCE	-	158m <sup>2</sup>
TOTAL AREA	-	200m <sup>2</sup>

# 3 Nelse Way, Werribee