



23 Clarence Street MANOR LAKES VIC

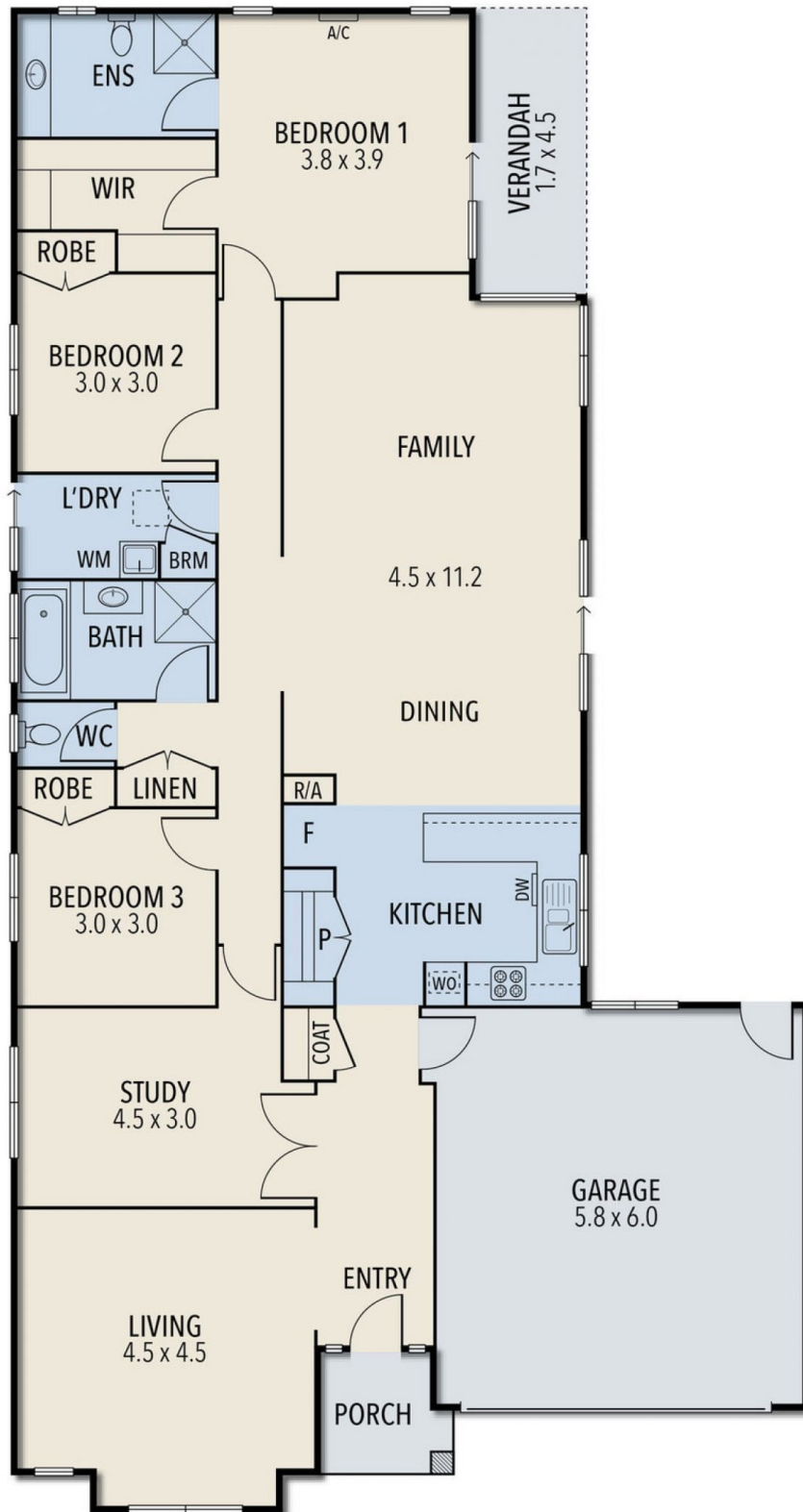
3  2  2 

Take the time to appreciate this magnificent, well-appointed home. Situated on a HUGE 640m² (approx.) allotment and positioned in one of the best and most convenient locations Manor Lakes has to offer!

Land Size : 640 sqm
View : <https://www.ypa.com.au/7361453>

The home comprises of three spacious bedrooms, including Master with Ensuite and WIR, two oversized living zones, an extra room which is big enough to be used as a bedroom, or as a study area! The large, fully equipped kitchen has an abundance of storage space and stainless-steel appliances. All of which overlooks the spacious backyard, complete with a pergola for all year-round entertaining! this massive backyard also has side access big enough for caravans, boats and trailers to be safely locked away in the privacy of your own backyard! Not only that, but there is still enough space for the kids and pets to play, this home was designed with family and

23 CLARENCE STREET, MANOR LAKES



ypa

ALL STATED DIMENSIONS ARE APPROXIMATE ONLY. PARTICULARS GIVEN ARE FOR GENERAL INFORMATION ONLY AND DO NOT CONSTITUTE ANY REPRESENTATION ON THE PART OF THE VENDOR AND AGENT.