



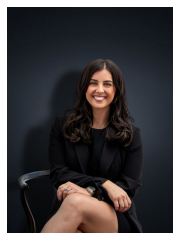
7 Adam Court WERRIBEE VIC

4  2  2 

Positioned in a quiet court location on a massive 789sq m block (approx..), this well-loved one owner property built by the famous Keogh homes is offered with nothing but the best in quality and features throughout.

Building Size : 24 sqm
Land Size : 789 sqm
View : <https://www.ypa.com.au/7361425>

Located within walking distance to Werribee River Bike & Walk Tracks and within close proximity to so many reputable schools, both Primary and High schools, Eagle Stadium (1.2km), Werribee CBD Shops, Public Transport, Restaurants & Cafes (3.4km), this home presents a rare opportunity for those looking to make the most of the easily accessible amenities and the best in family lifestyle! Put simply this is a forever home and it includes;



Kirsty Cunningham
0414 344 475

- Four Bedrooms (or three bedrooms with separate study)
- Master bedroom with walk in robe and ensuite
- Formal lounge and formal dining space or study area
- Kitchen/Meals area