



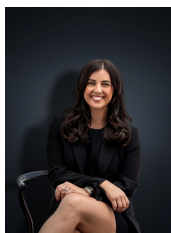
163 Cambridge Crescent WYNDHAM VALE VIC

3  1  2 

Nestled in one of Wyndham Vales most desirable locations, this well-established home sits on approximately 530sq m and only a short drive to Restaurants, Cafes, Wyndham Vale train station and local shops. A mere 3 minute drive (1.5km) to Eagle stadium and gym and a short distance to Werribee Racecourse and Community Centre (2.5km). Werribee CBD is also only a short drive away.

Building Size : 12 sqm
Land Size : 530 sqm
View : <https://www.ypa.com.au/7361416>

This home offers a great space for young families and investors alike, looking for a great location with reputable schools, parks and walking/bike tracks right near you. With a fresh update inside including brand new carpets, painting and landscaped gardens this exciting opportunity offers:



Kirsty Cunningham
0414 344 475

- Three large bedrooms with built in robes
- Central renovated bathroom
- Open plan lounge room
- Kitchen and dining arrangement