



24 Kasem Drive WERRIBEE VIC

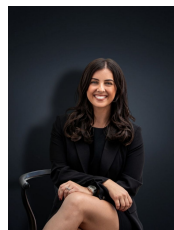
4  2  2 

This neat & tidy home is ready to find its next proud owners! Situated in a quiet pocket of the highly sought after Riverdene Estate on a generous 682sq m corner block (approx.), this wonderful home offers nothing but the best in positioning.

Located within walking distance to Werribee River Bike & Walking Tracks and in close proximity to reputable schools including Westgrove & Bethany Primary Schools, public transport and Pacific Werribee Shopping Centre (2.4km). This home presents a fantastic opportunity for those looking to make the most of the easily accessible amenities and a long term family home, with so many features to offer.

The home itself offers:
Four bedrooms

Land Size : 682 sqm
View : <https://www.ypa.com.au/7361405>



Kirsty Cunningham
0414 344 475



Scale in metres. Indicative only. Dimensions are approximate. All information contained herein is gathered from sources we believe to be reliable. However we cannot guarantee its accuracy and interested parties should rely on their own enquiries.

RESIDENCE	-	207m ²
OUTDOOR ENTERTAINING AREA	-	33m ²
GARAGE	-	32m ²
TOTAL AREA	-	272m²



24 Kasem Drive, Werribee