

### 3 Maygrand Avenue WERRIBEE VIC

4 2 2

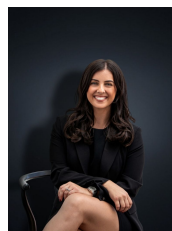
Nestled within the young and impressive Kings Leigh estate, this stunning newly built Boutique family home offers nothing but the best in quality and designer features throughout.

Situated in close proximity to Werribee CBD with Restaurants, Shops, Cafes and reputable schools, you are minutes from all amenities! With close access to the Princes Freeway and Riverwalk water park, this home is perfect for the growing family or those that need access to Melbourne CBD within approx. 35km.

Situated on approximately 448 sq m with a family friendly and flowing floor plan, this home boasts all the bells and whistles that will save the hassle of building! This opulent home offers;

Four spacious bedrooms

**Building Size** : 21 sqm  
**Land Size** : 448 sqm  
**View** : <https://www.ypa.com.au/7361395>



**Kirsty Cunningham**  
0414 344 475