



### 3 Amesbury Avenue WYNDHAM VALE VIC

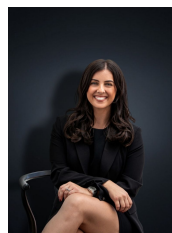
4 2 2

Situated in the heart of Wyndham Vale within the Bluestone Estate is this immaculately presented and much-loved family residence, with meticulous gardens from front to back and positioned on a generous 594sq m block (approx.) this is a must add to your inspection list.

With beautiful street presence & appeal and a large open plan design this home creates a great space for any family looking for a stunning home in a fantastic location.

With Wyndham Vale Primary School located at the far end of the street (650m) and only 1.2km from your local shopping centre and amenities, 3.2km from Wyndham Vale Train Station and only a 10 minute drive to Werribee CBD Shops, Cafes, Restaurants and Metro Train Station. This home is perfect for those looking for a central family friendly location close by to parks, walking and bike tracks and reputable schools. The home offers:

**Building Size** : 31 sqm  
**Land Size** : 594 sqm  
**View** : <https://www.ypa.com.au/7361376>



**Kirsty Cunningham**  
0414 344 475