



## 4 Coorong Walk Werribee VIC

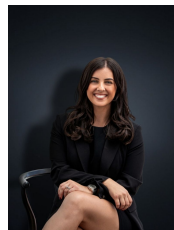
4 🚗 2 🚿 2 🚗

Sprawling over two levels with over 38 squares of total area this luxurious family home boasts impeccable quality and design in the heart of the thriving Harpley Estate. No effort has been spared in this executively built Carlisle Home, offering a luxurious design over two levels, suitable for a large or growing family. With a bold and grand street presence this home is ready to find its next proud owners.

Located in the prestigious Harpley estate nearby to waterways, parks, bike and walk tracks this position is undeniably one of the most desirable that Werribee has to offer. With brand new schooling currently under construction within walking distance and local established amenities, shops, restaurants all within a short drive from your new home.

With plans in place for a future waterfront town centre, train

**Price** : \$ 725,000  
**Building Size** : 278.4 sqm  
**Land Size** : 448 sqm  
**View** : <https://www.ypa.com.au/7361373>



**Kirsty Cunningham**  
0414 344 475