



8 Dampier Court WYNDHAM VALE VIC

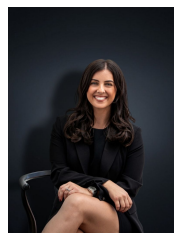
4  2  2 

Nestled in a quiet court location this well loved family home sits on a surprising allotment of approximately 1,063 sq m. Selling the dream lifestyle the home provides a high list of upgrades, numerous living zones and a unique style to suit those families looking for something particular.

With location ticking all the boxes you are within walking distance to Public transport, local parklands, a short 6 minute drive to Wyndham Vale Train Station & Werribee CBD only approximately 10 minutes away.

Suitable for any family that loves to entertain the indoor and outdoor combination is simply brilliant & must be inspected to be appreciated. The home offers;
Master with WIR and ensuite
Remaining three bedrooms with BIRs
Formal lounge upon entry with fireplace

Building Size : 23 sqm
Land Size : 1063 sqm
View : <https://www.ypa.com.au/7361349>



Kirsty Cunningham
0414 344 475