



22 Yarra Street WERRIBEE VIC

3 1 1

This wonderfully refined and well loved home combines spacious proportions and a flexible easy to maintain floor plan. Situated in the popular Riverdene estate, the property is located close by to Pacific Werribee, Wyndham Central school, Werribee river, parklands & trails and bus stops this home is perfect for those whom are looking for a convenient location close by to everything!

The home features a covered outdoor entertaining area and an easily maintained garden perfect for those looking for their first home or an investment opportunity (currently leased until November 2019).

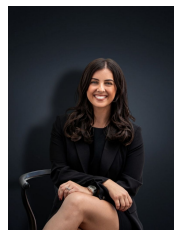
The home features:

Master bedroom with walk in robe

Two spacious bedrooms remaining (one with a walk in robe and other with a built in robe)

Land Size : 336 sqm

View : <https://www.ypa.com.au/7361330>



Kirsty Cunningham
0414 344 475

22 Yarra Street, Werribee

