



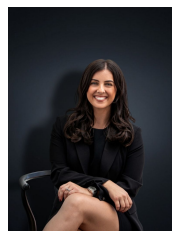
32 Golden Square Crescent HOPPERS CROSSING VIC

3 2 2

Exceptionally located in central Hoppers Crossing this wonderfully maintained family home sits you within minutes to everything that Hoppers Crossing has to offer. Within 2.0km you will reach Pacific Werribee Shopping centre, approx 4.5km to either Hoppers Crossing or Werribee Train stations, Walking distance to parklands, reputable schools, local shops & only a short drive to freeway access. The location evidently ticks all the boxes & the house itself situated on approximately 530 sq m offers;

Building Size : 13 sqm
Land Size : 530 sqm
View : <https://www.ypa.com.au/7361292>

- Three bedrooms
- Master bedroom with walk in robe and en suite
- Formal lounge upon entry
- Kitchen/meals/family living arrangement
- Massive outdoor pergola & entertaining area
- Drive through access to the rear yard & additional off-street parking



Kirsty Cunningham
 0414 344 475