



20 Salisbury Street WERRIBEE VIC

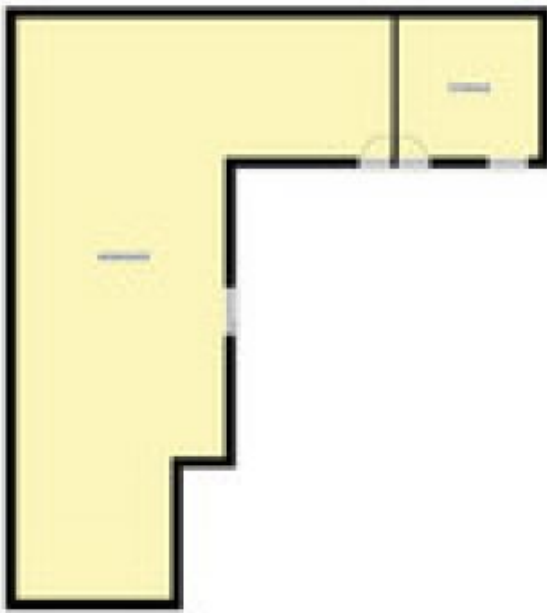
2 1 4

An opportunity of a lifetime at the forefront of Wyndhams Planning Scheme is this amazing opportunity. This large allotment of approx. 613m2 is located in the ACTIVITY CENTRE Schedule 1 and is zoned to build between 2-5 storeys (multi-purpose commercial and residential STCA) and also features rear laneway access.

Building Size : 14 sqm
Land Size : 613 sqm
View : <https://www.ypa.com.au/7361258>

Positioned one street back from Synnot Street and Within a few hundred meters to Werribee Station and is in the very heart of growing Werribee and showcases its position with premium street exposure. The home has been well maintained and offers 2 great sized bedrooms, updated kitchen and bathroom, heating and cooling, multiple car storage with a garage at the front and huge workshop accessible from the rear laneway

This property is perfect for a savvy investor or developer looking to capitalize on Werribee s future growth. Call



20 Salisbury Street, Werribee



ypa

While every attempt has been made to ensure the accuracy of this floor plan, the purchaser should verify the details of any building, contents and fixtures, and should not rely on this floor plan as a basis for any decision. The purchaser should also verify the details of any building, contents and fixtures, and should not rely on this floor plan as a basis for any decision. The purchaser should also verify the details of any building, contents and fixtures, and should not rely on this floor plan as a basis for any decision.



