



19 Tindale Boulevard WERRIBEE VIC

4 2 2

This stunning home built with nothing but the best in quality and timeless design throughout is offered to the buying market in BRAND NEW condition and saves all the hassles of building. Nestled the prestigious Kings Leigh estate with close access to the freeway, Werribee CBD & Train Station, local shops, Riverwalk water park and Primary School & Village Centre (both coming soon) this will set your family up for many years to come. The home offers a long list of features, including:

Four large bedrooms with built in robes

Expansive master bedroom with fitted walk in robe and ensuite

Central bathroom with stone benchtops

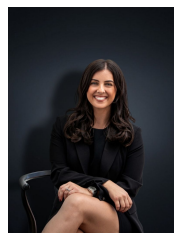
Theatre room

Large kitchen with loads of features including wrap around benches, stone benchtops, loads of cupboard space, walk in pantry, 900mm upright appliances and dishwasher and

Building Size : 29 sqm

Land Size : 476 sqm

View : <https://www.ypa.com.au/7361249>



Kirsty Cunningham
0414 344 475