



33 Morgan Crescent WERRIBEE VIC

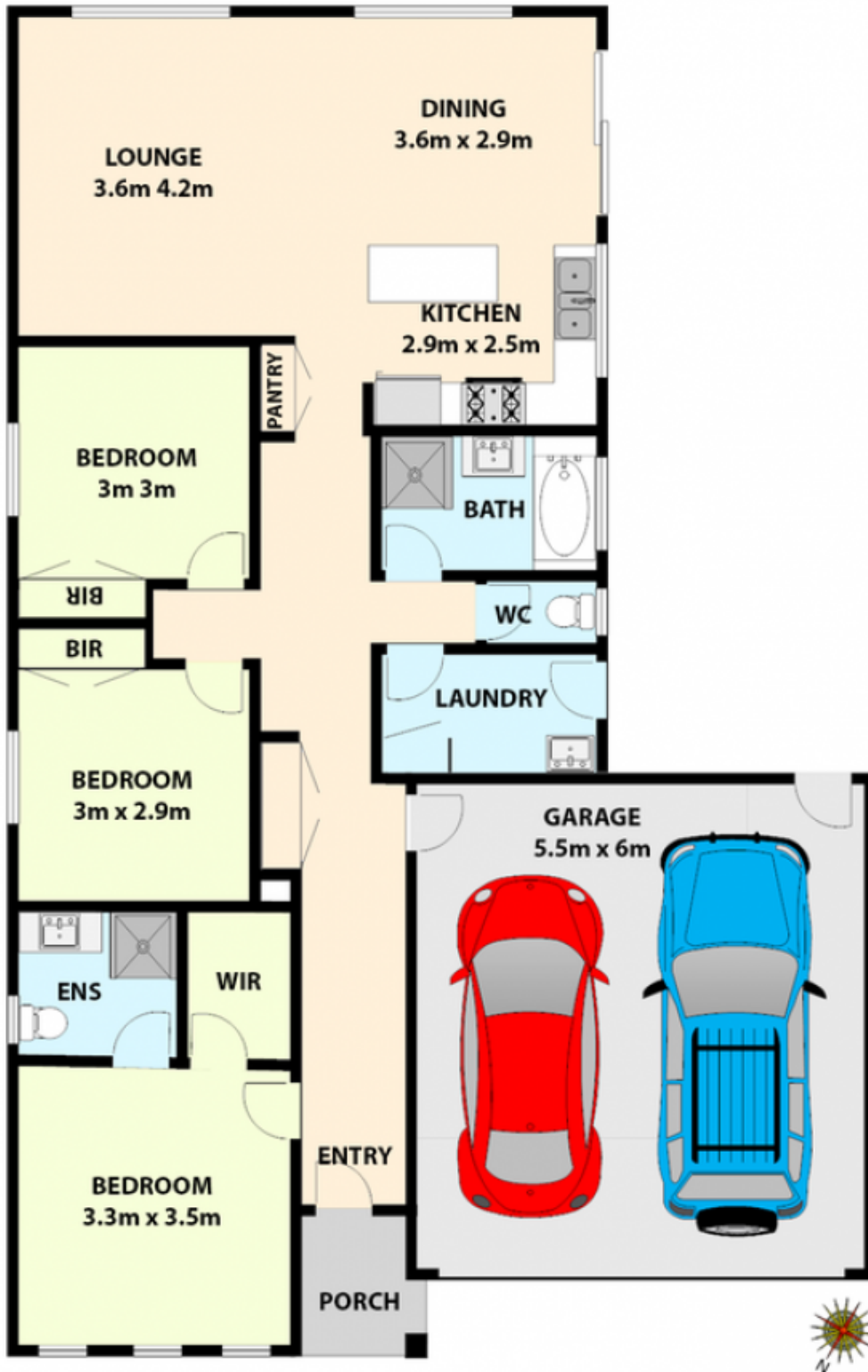
3 2 2

1st home buyers, astute investors or an elderly couple looking for a super low maintenance property with all amenities within minutes look no further than 33 Morgan Crescent.

Building Size : 16 sqm
Land Size : 300 sqm
View : <https://www.ypa.com.au/7361212>

Walk to Werribee CBD, cafes, restaurants, shops, Werribee Secondary, Mackillop Catholic College, Corpus Christi primary and Werribee Primary school. Only 2 minutes drive onto the M1 to Melbourne CBD within 30 minutes, a short 3-5 minute drive to Werribee Open Range Zoo, Werribee Park mansion, Shadow fax winery and a 10 minute drive to Wyndham Harbor-Werribee south beach.

Presenting three fitted bedrooms, master with en suite and walk in robe, central bathroom and an open plan tiled family/meals arrangement overlooking the modern hostess kitchen. Appointments include stainless steel appliances,



33 MORGAN CRESCENT, WERRIBEE

All data and dimensions in this sketch are approximate